

P194 : Derivation of the Main Imbalance Price

Analysis for Modification Group Meeting 2

Rob Smith

Data Provision Dates

Peak determined as day with highest Demand Period
Off Peak determined as day with lowest demand period

1. Electricity : Days For Analysis

2. **Summer (Apr 04 - Aug 04)**

Triad Days

3. Peak 06/04/04

01/12/04

4. Off Peak 13/06/04

13/12/04

24/01/05

5. **Autumn Equinox (Sep 04)**

Spring Equinox (Mar 05)

6. Peak 29/09/04

Peak

02/03/05

7. Off Peak 12/09/04

Off Peak

27/03/05

8. **Winter (Oct 04 - Feb 05)**

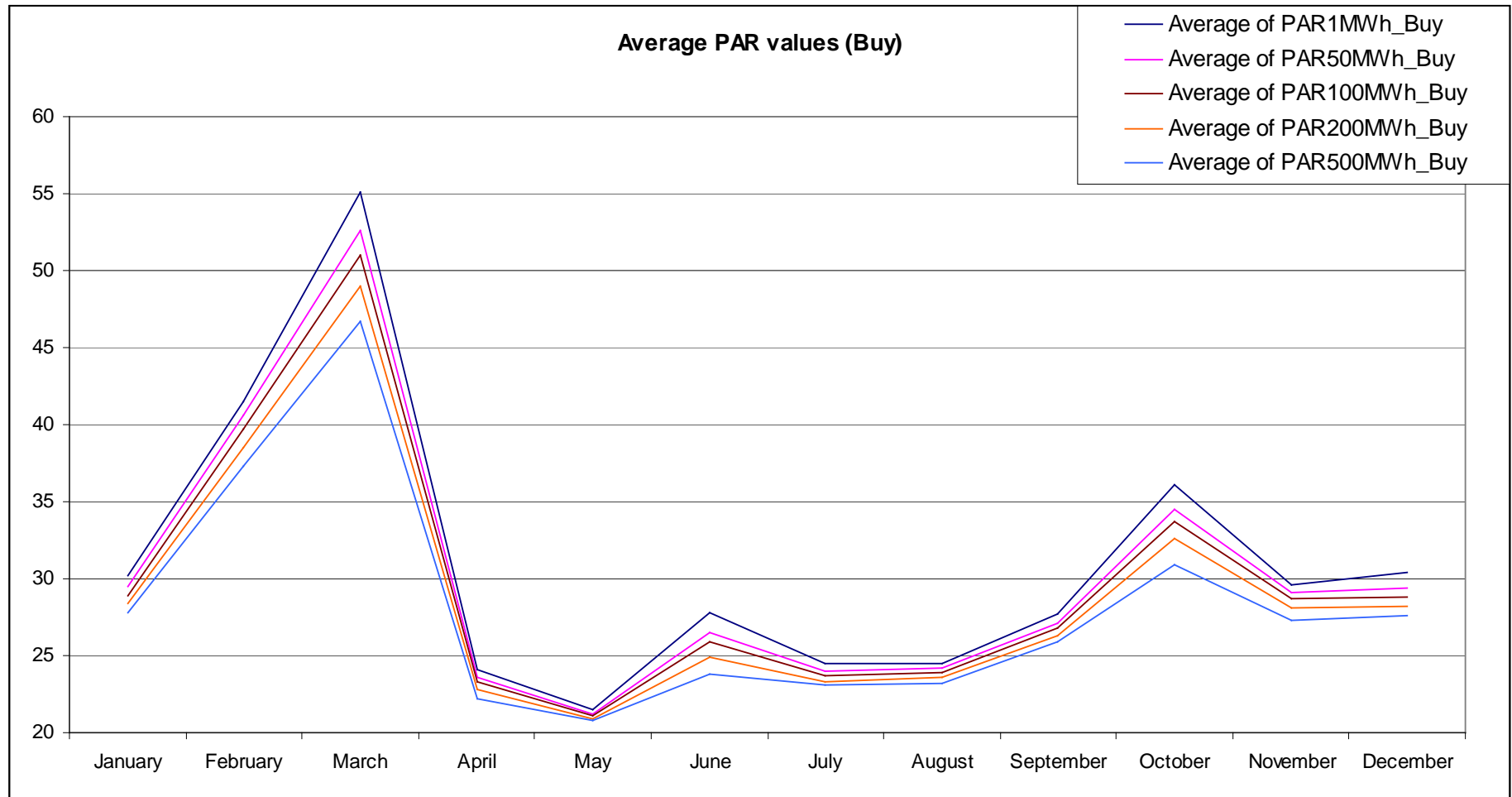
9. Peak 13/12/04

10. Off Peak 03/10/04

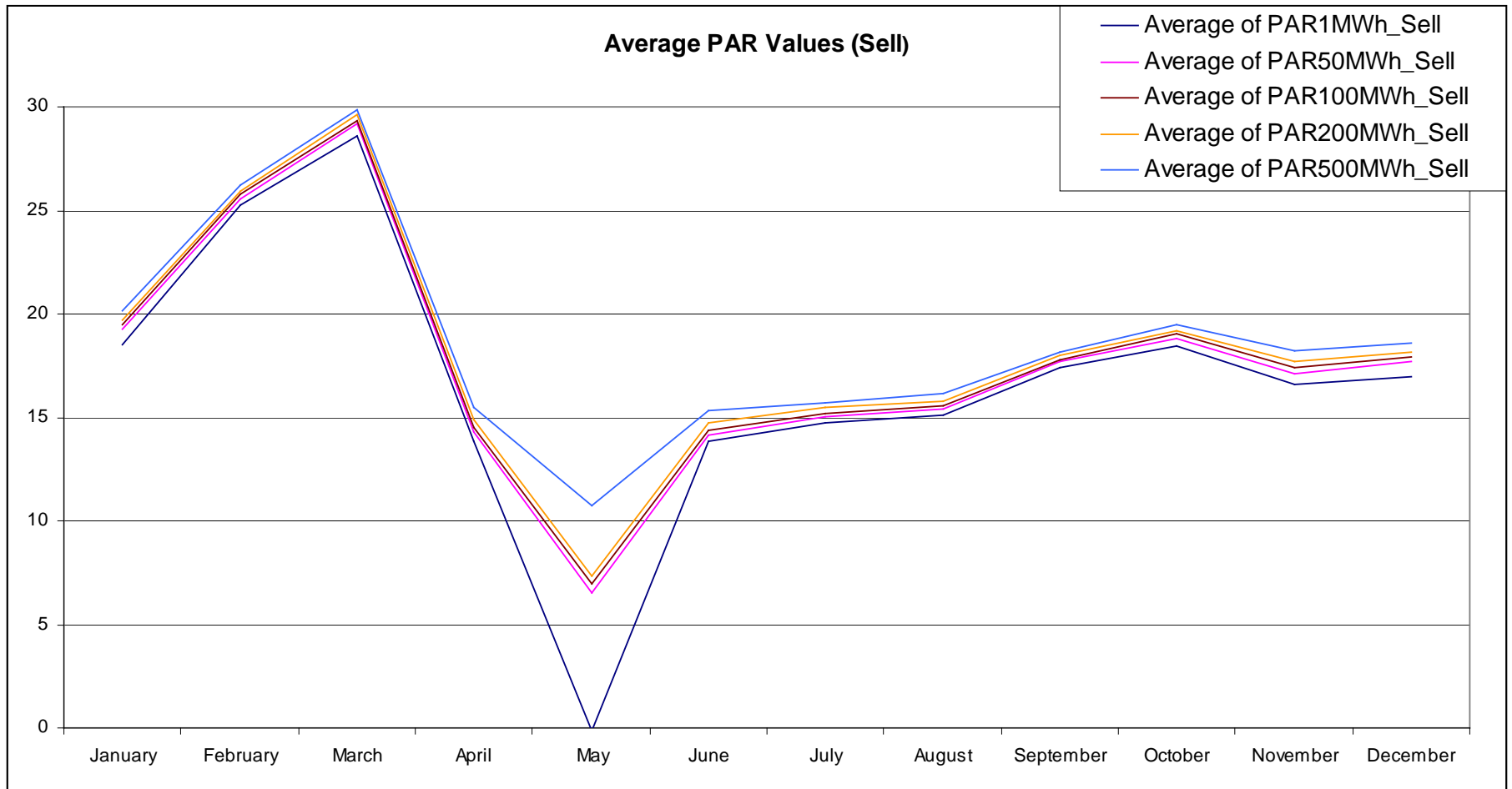
11.

nationalgrid

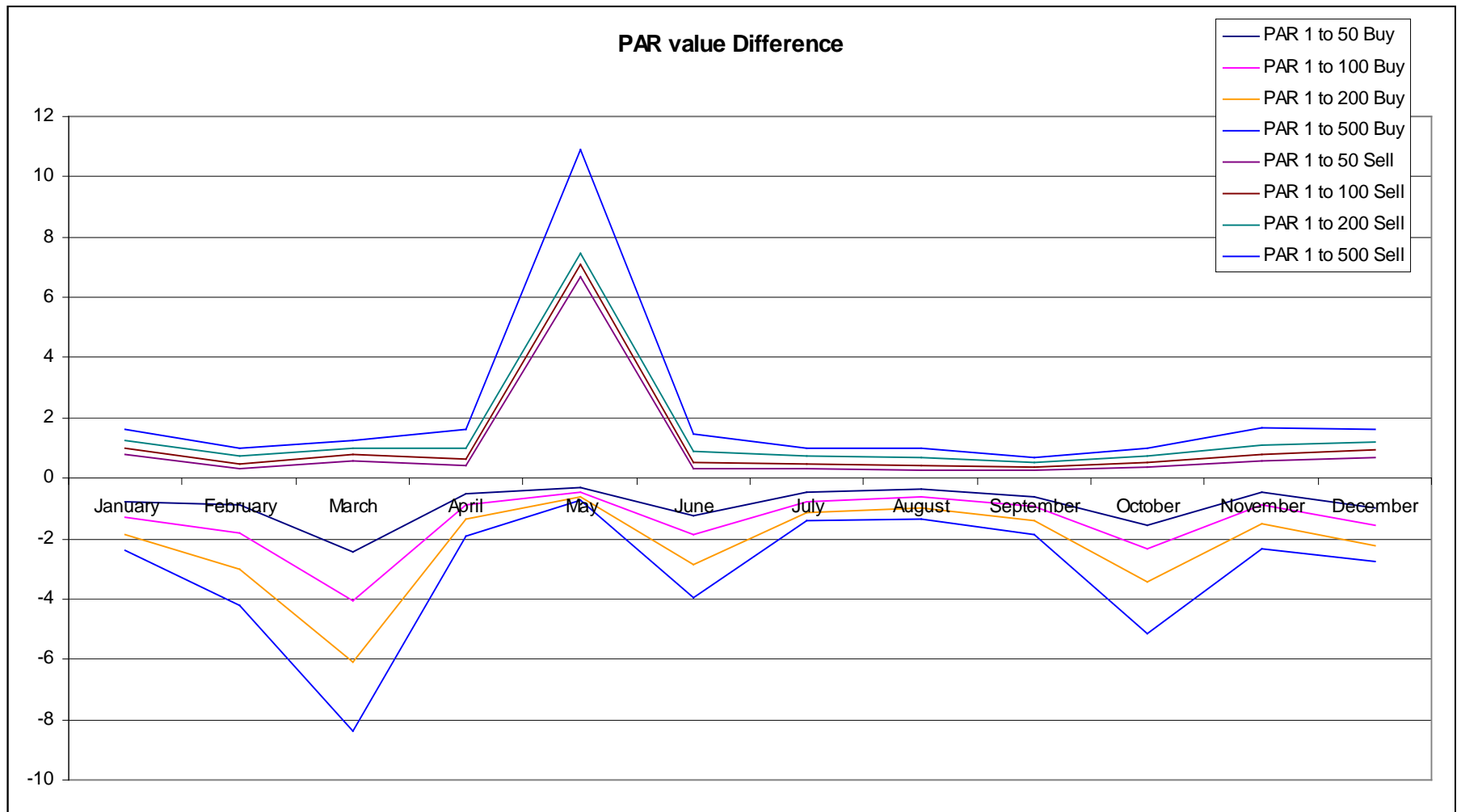
Average PAR Values (Buy)



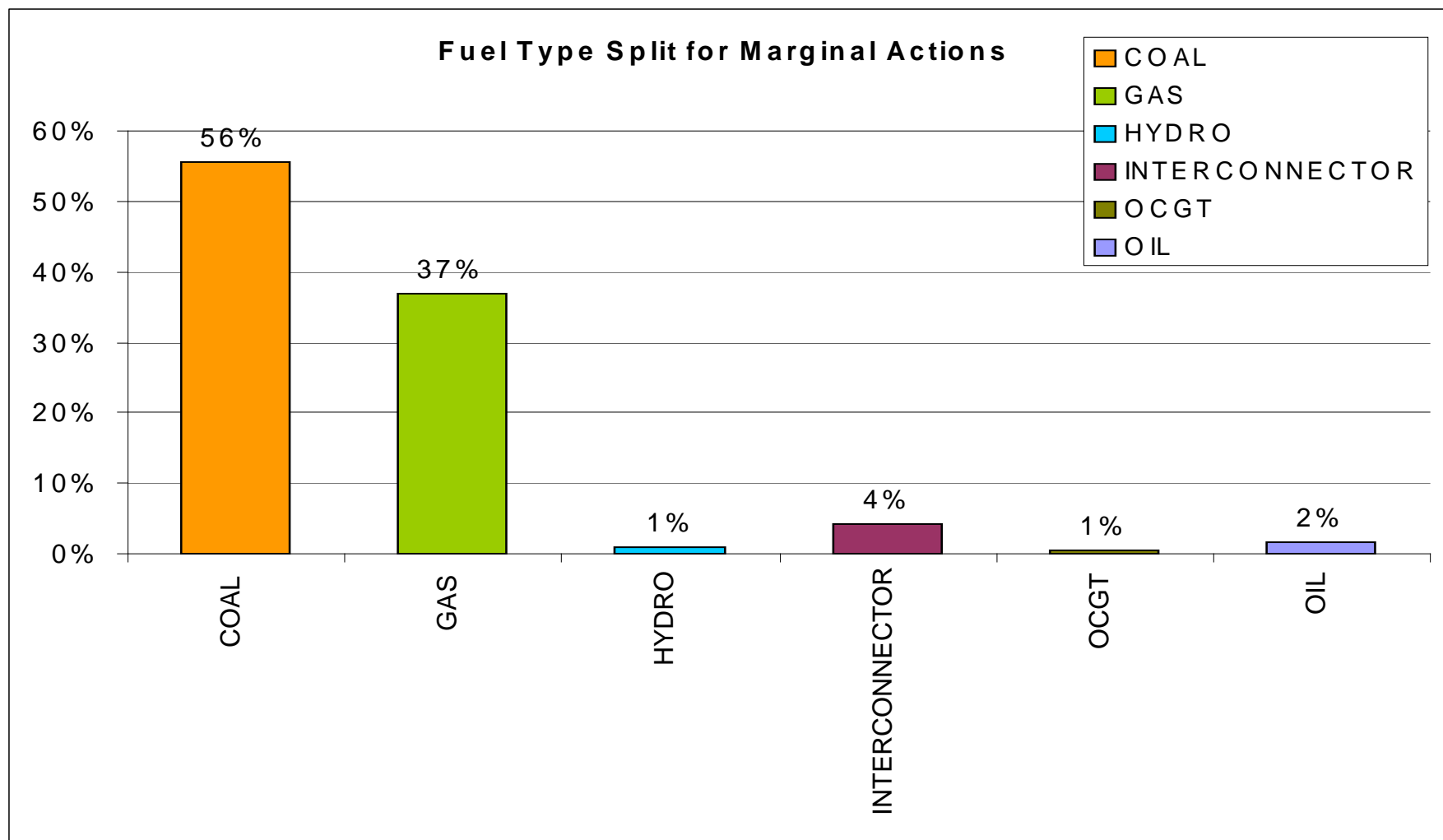
Average PAR Values (Sell)



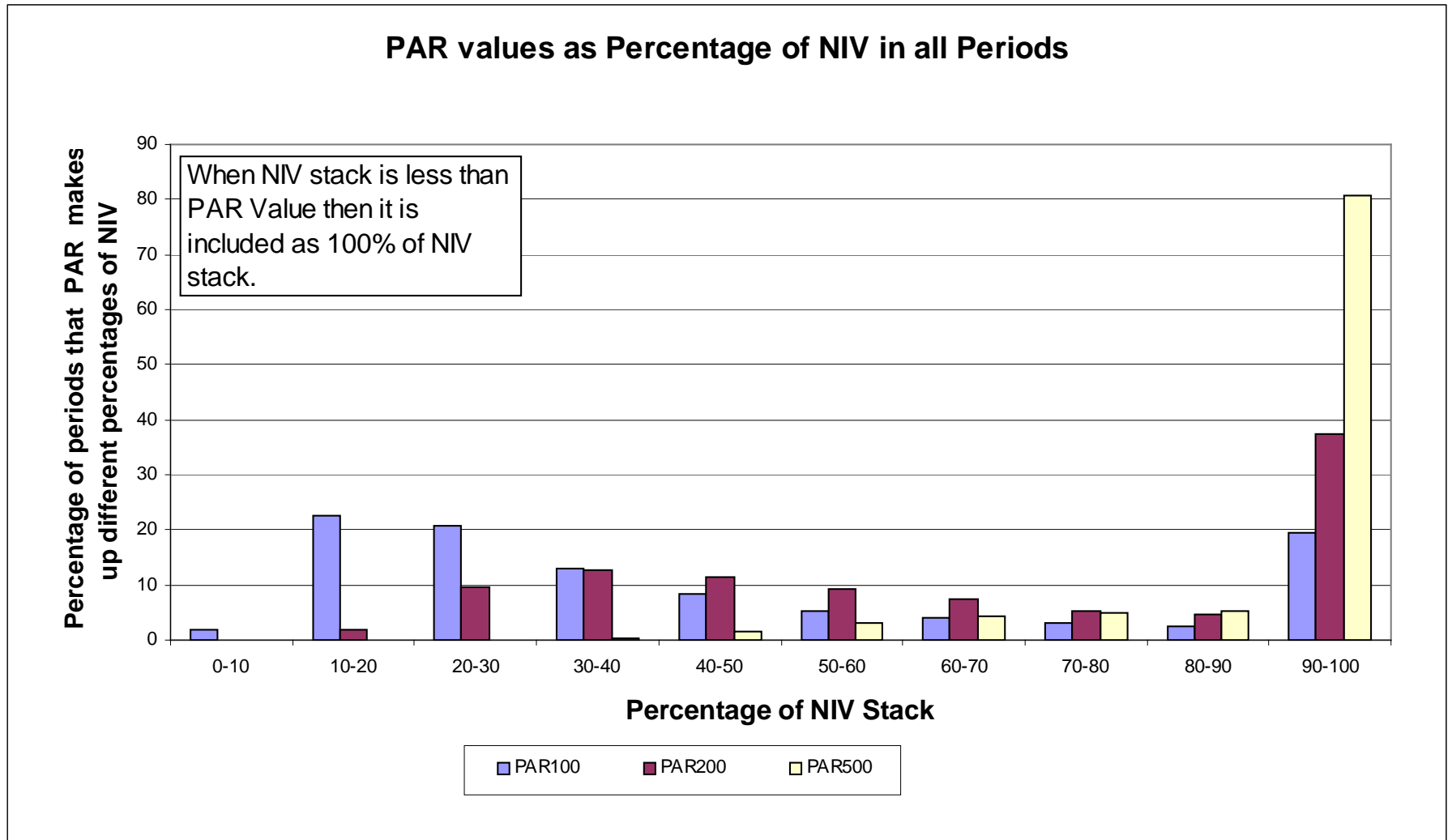
PAR to Marginal Difference



Fuel Type Final Action

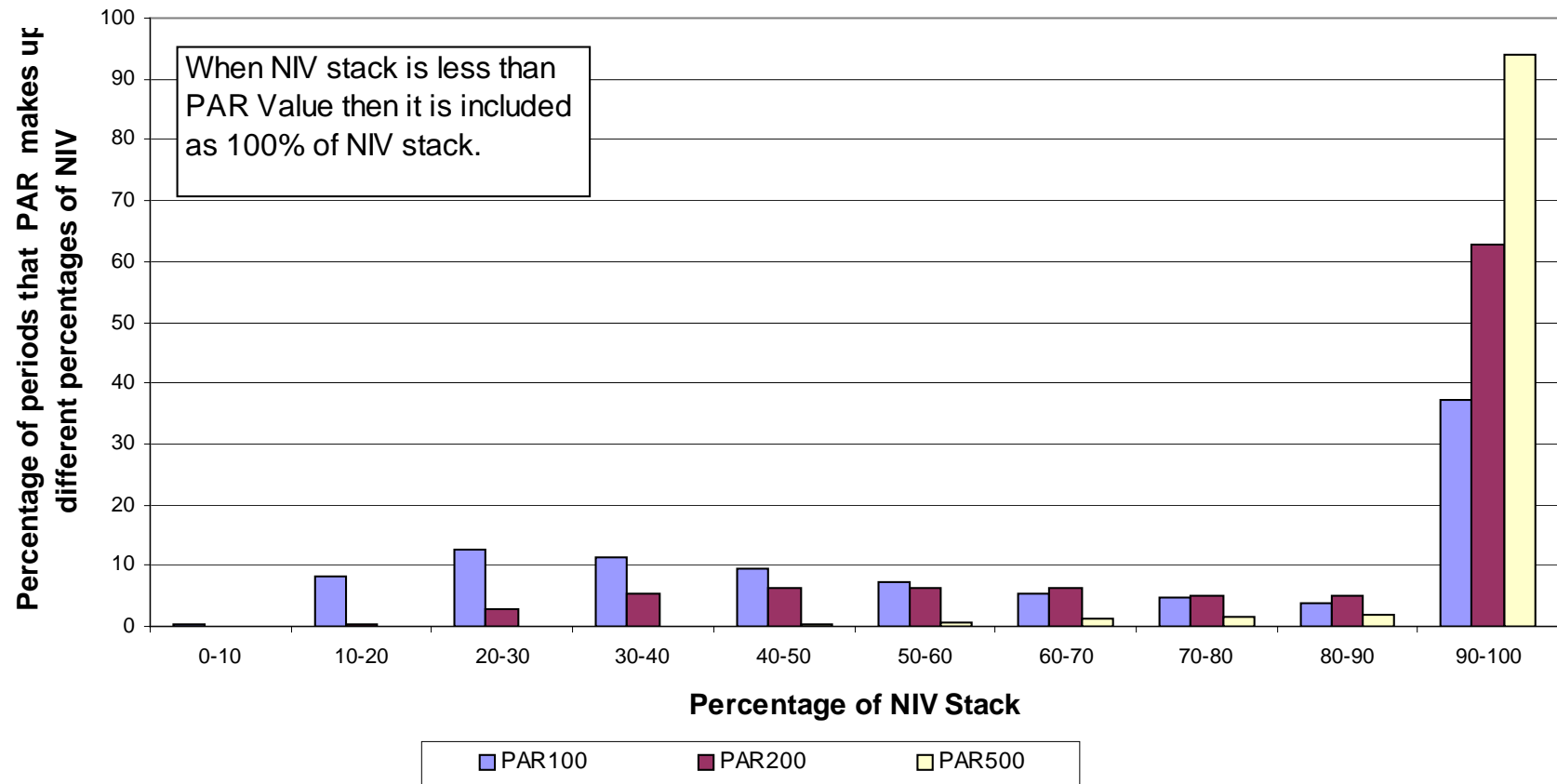


PAR as Percentage of NIV

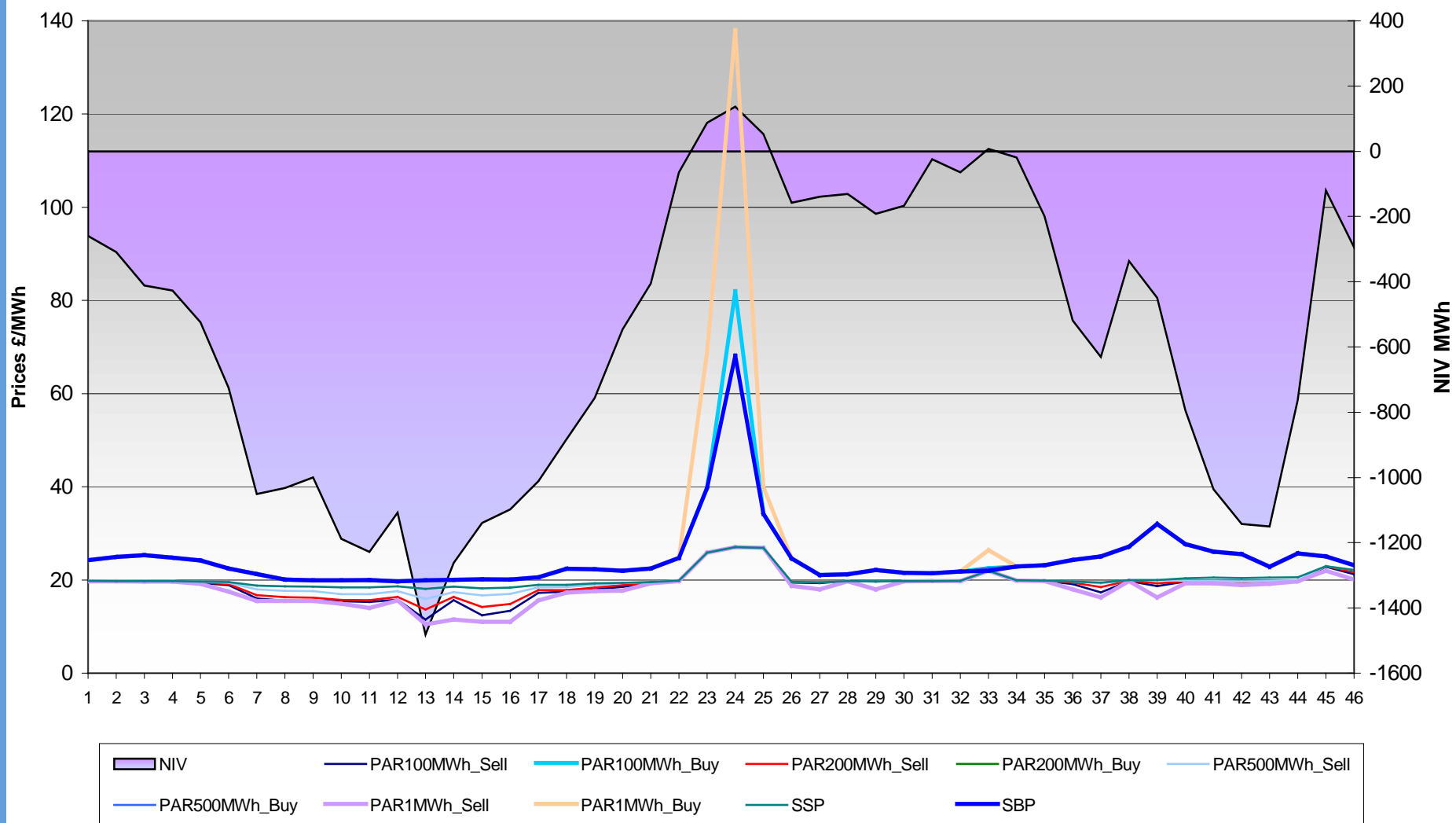


PAR as Percentage of NIV

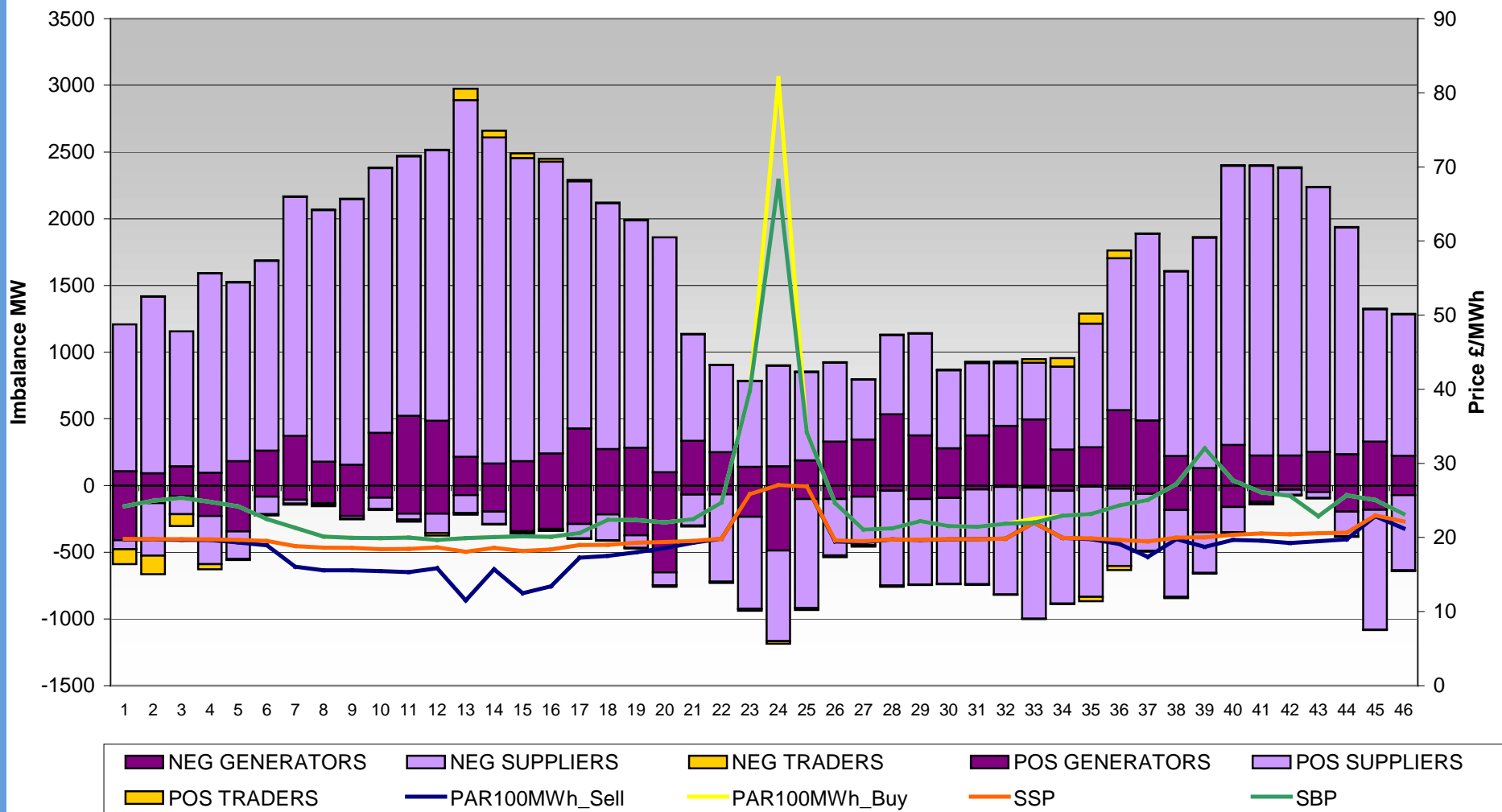
PAR values as Percentage of NIV in Periods that are Short



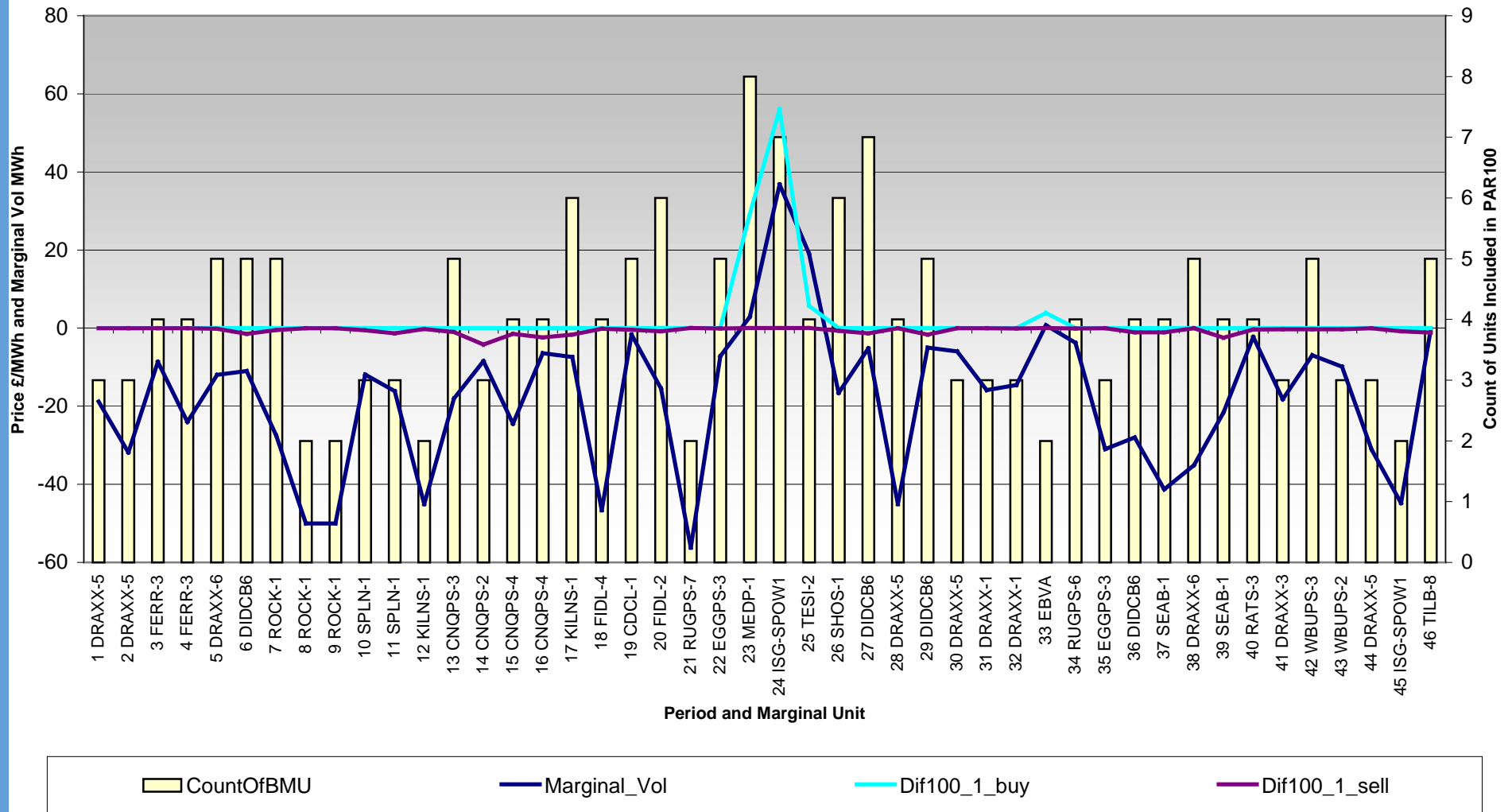
Imbalance Price & Associated Variables : 27th Mar 05



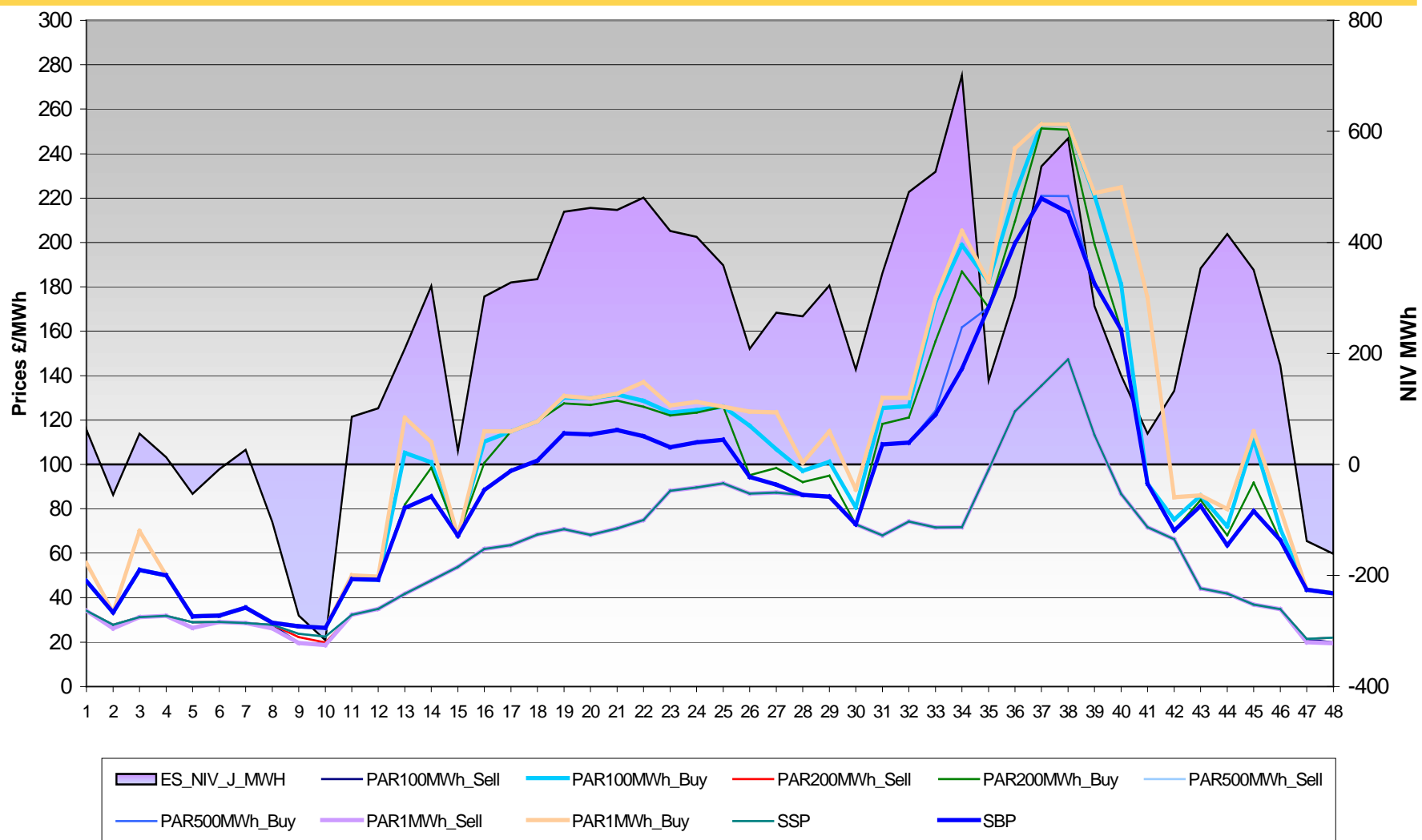
Imbalance Price & Associated Variables : 27th Mar 05



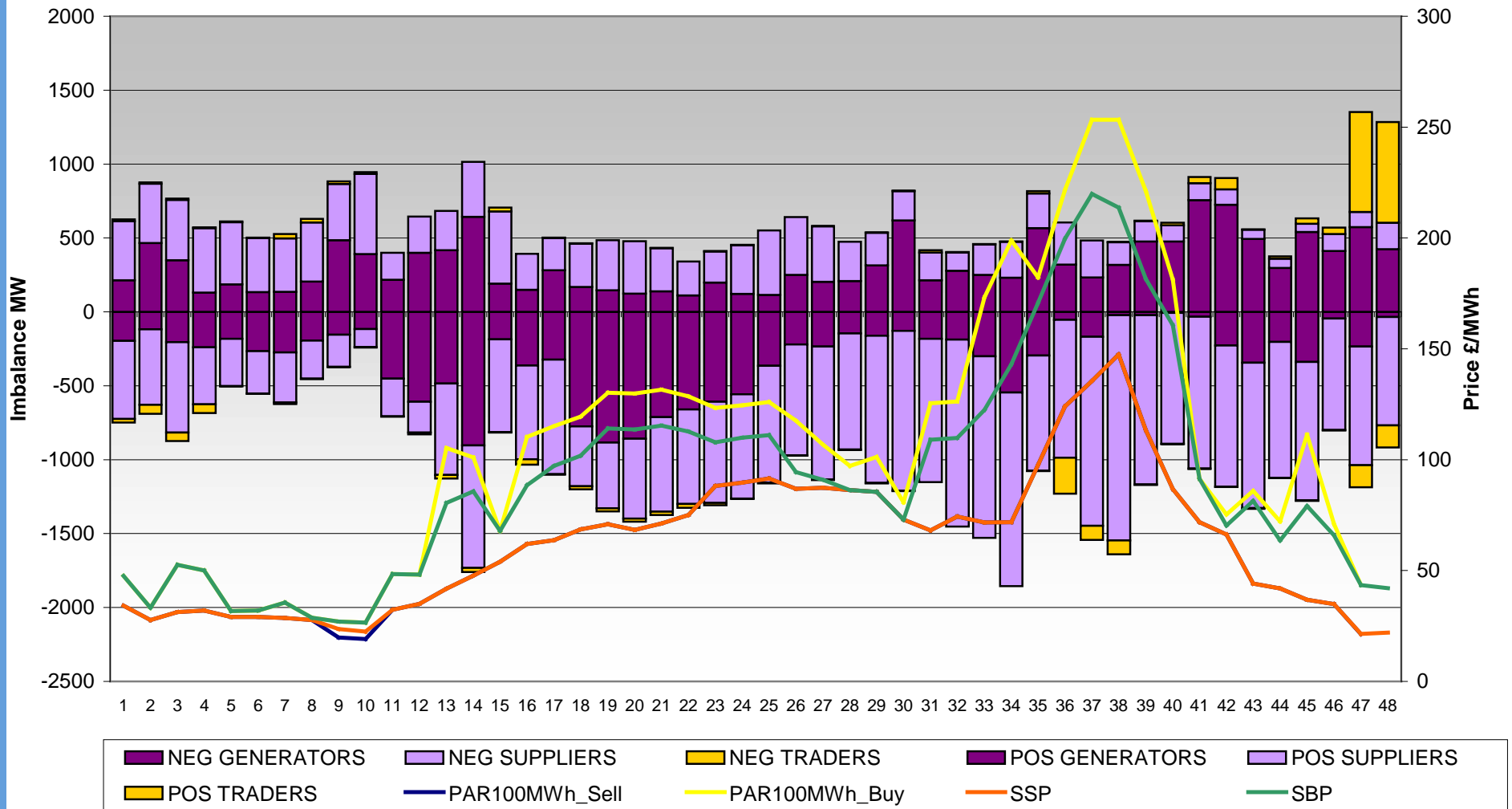
Imbalance Price & Associated Variables 27th Mar 05



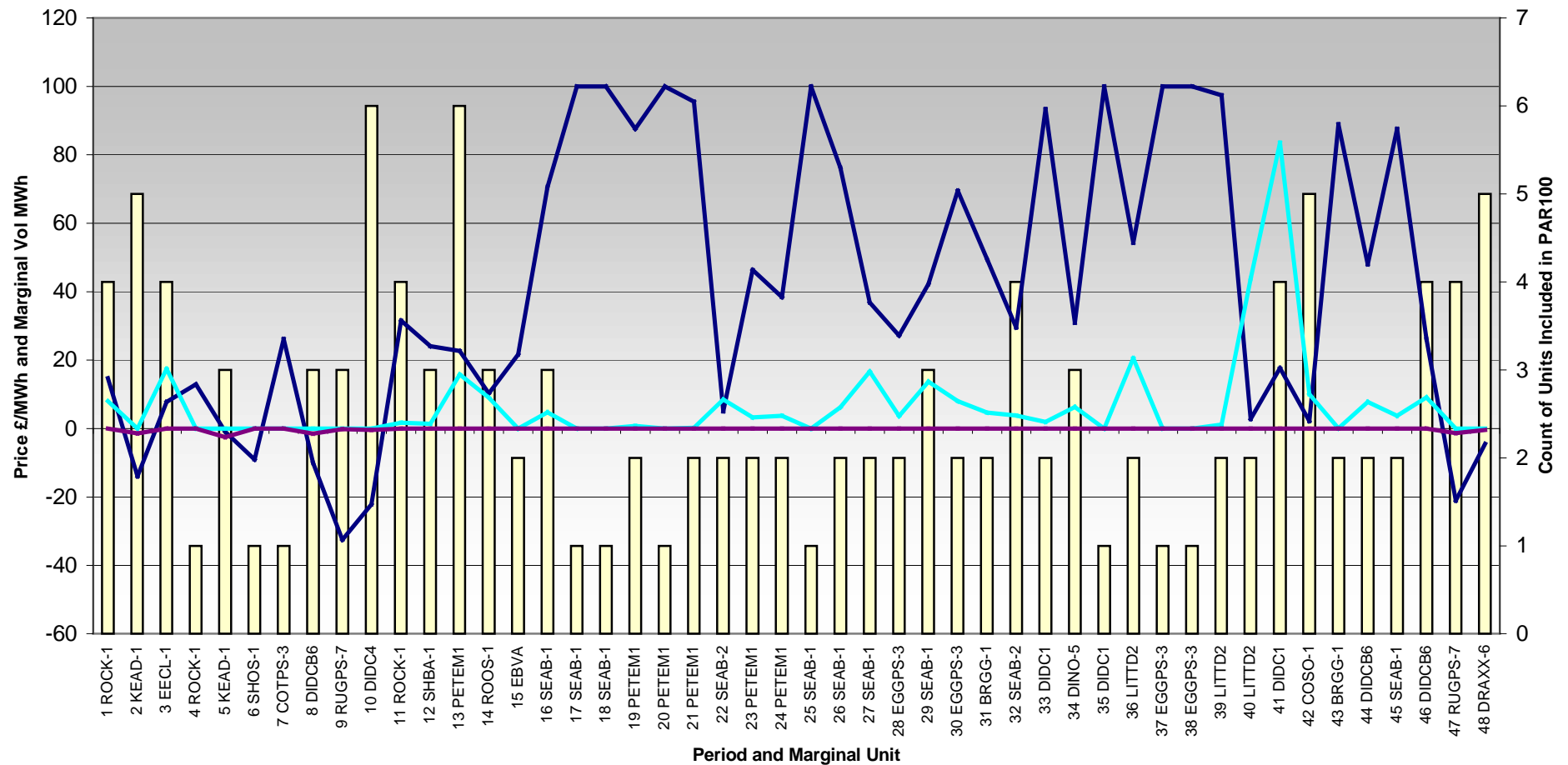
Imbalance Price & Associated Variables : 02nd Mar 05



Imbalance Price & Associated Variables : 02nd Mar 05



Imbalance Price & Associated Variables 02nd Mar 05



CountOfBMU

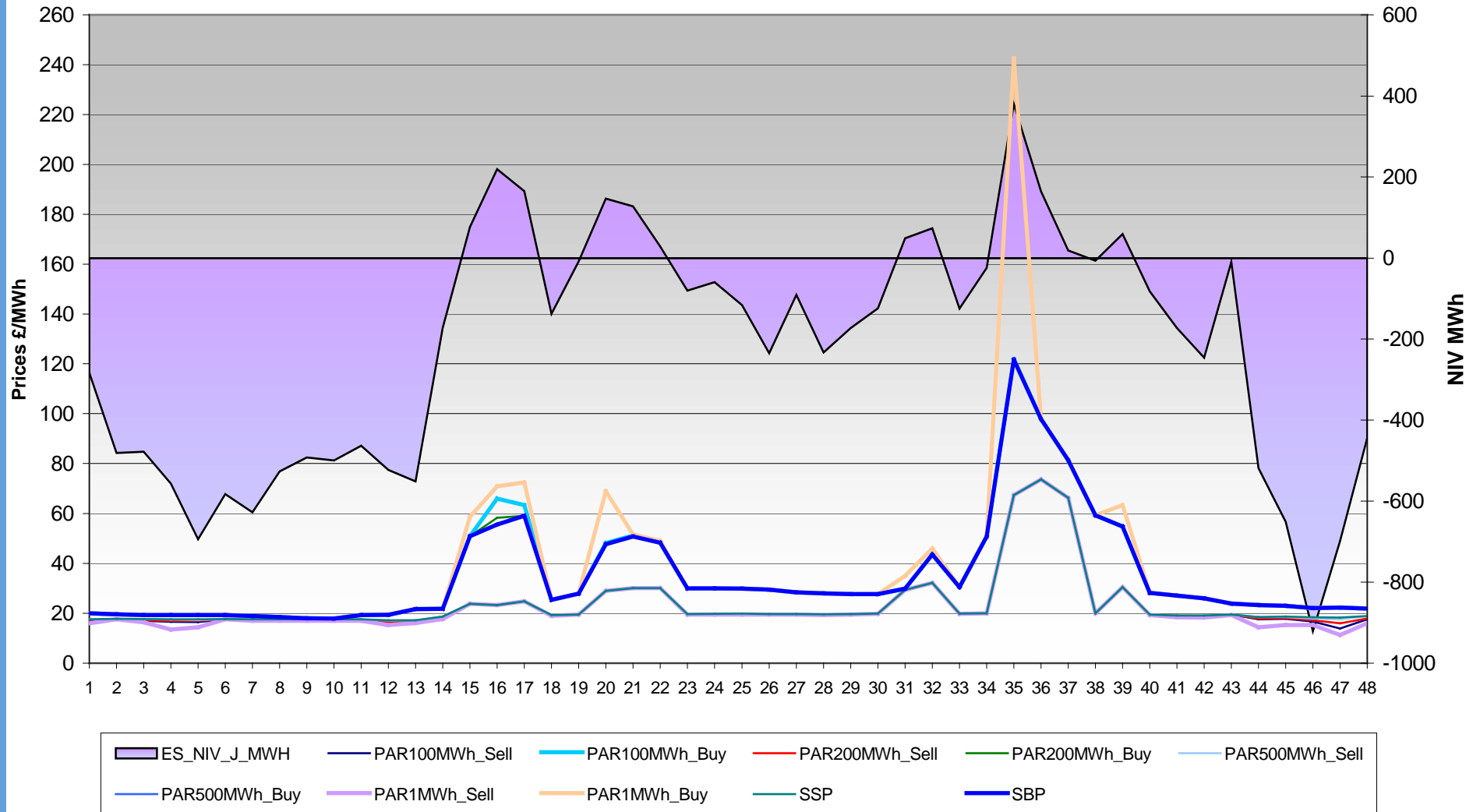
Marginal_Vo;

Dif100_1_buy

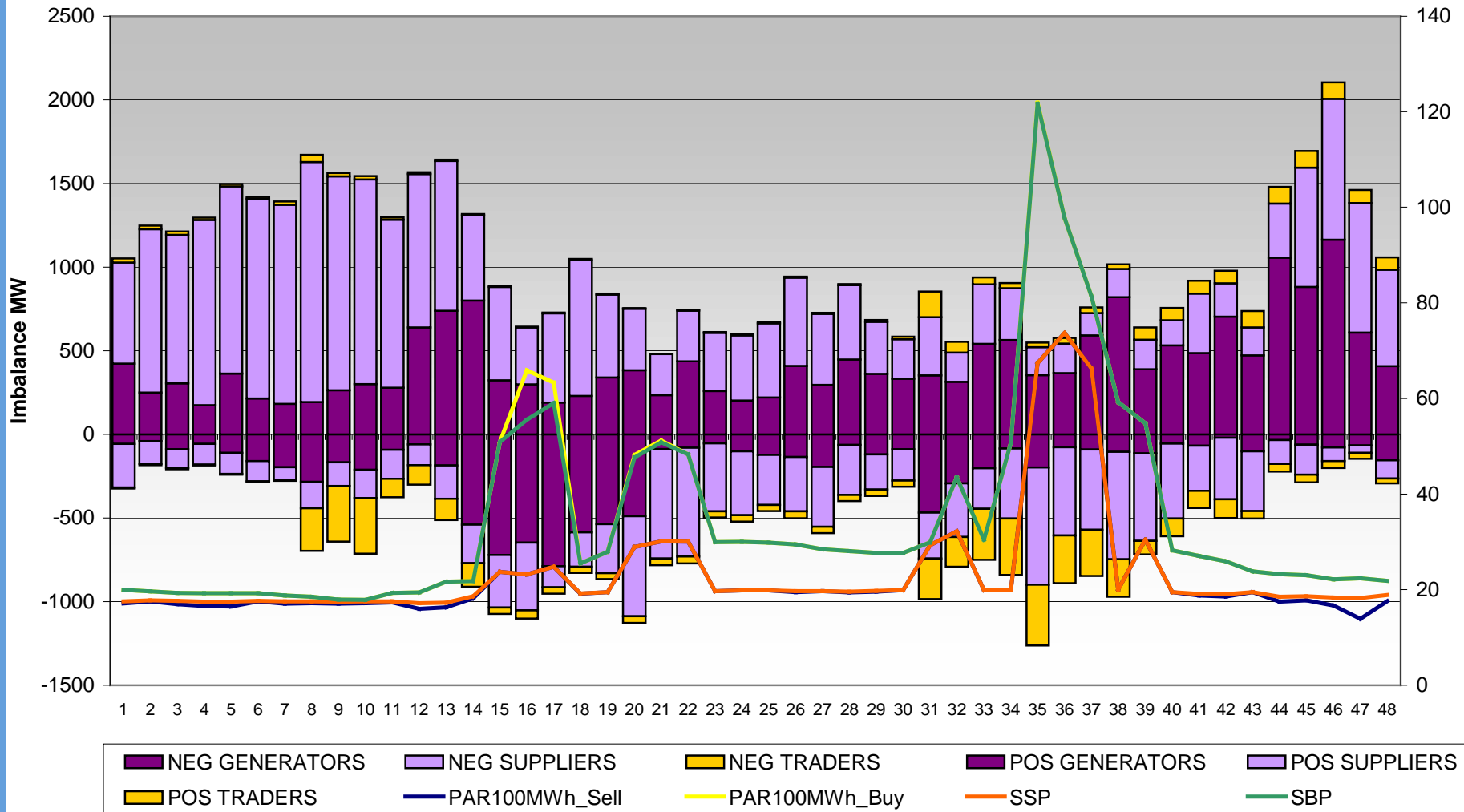
Dif100_1_sell

nationalgrid

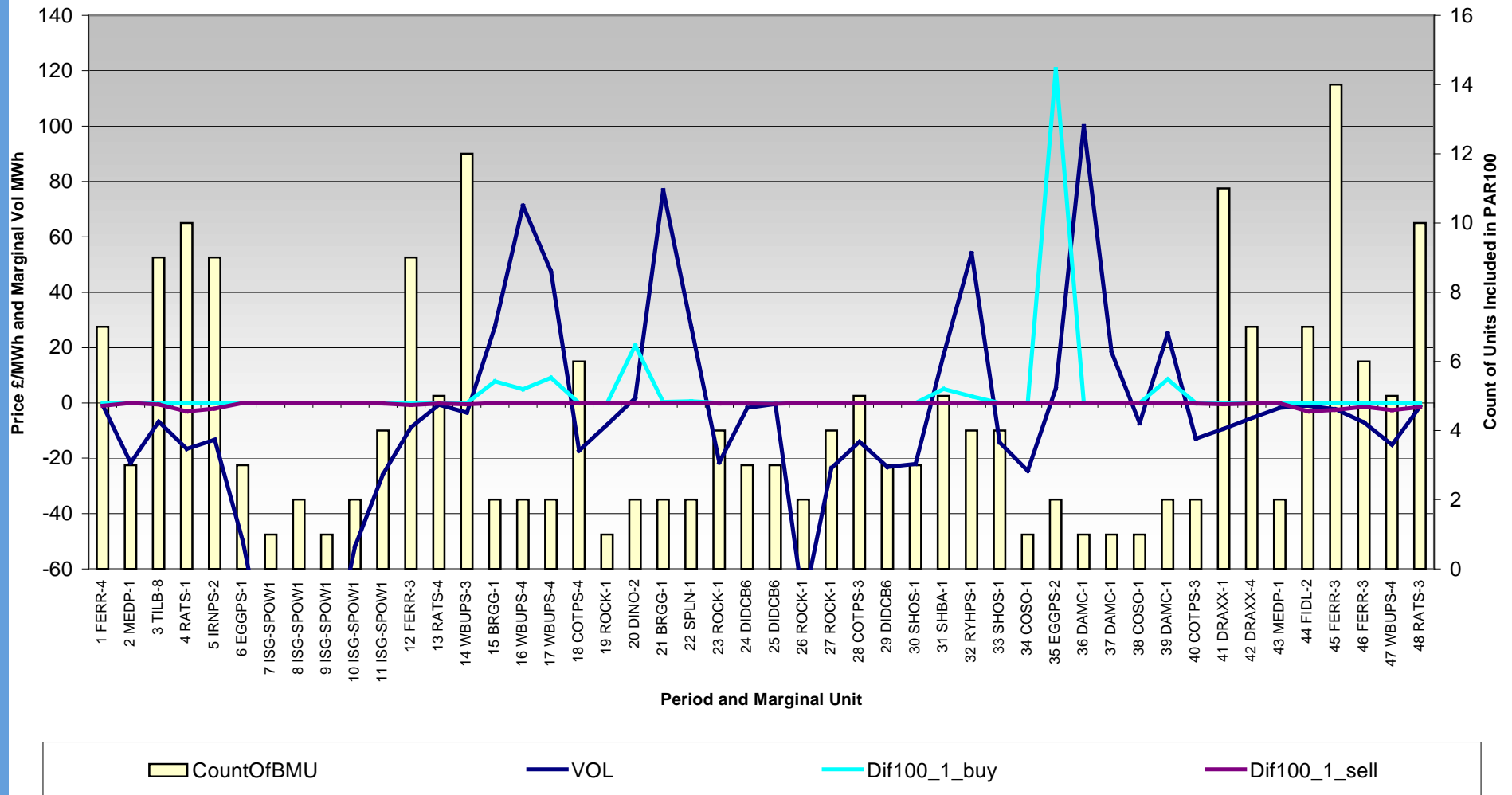
Imbalance Price & Associated Variables : 24th Jan 05



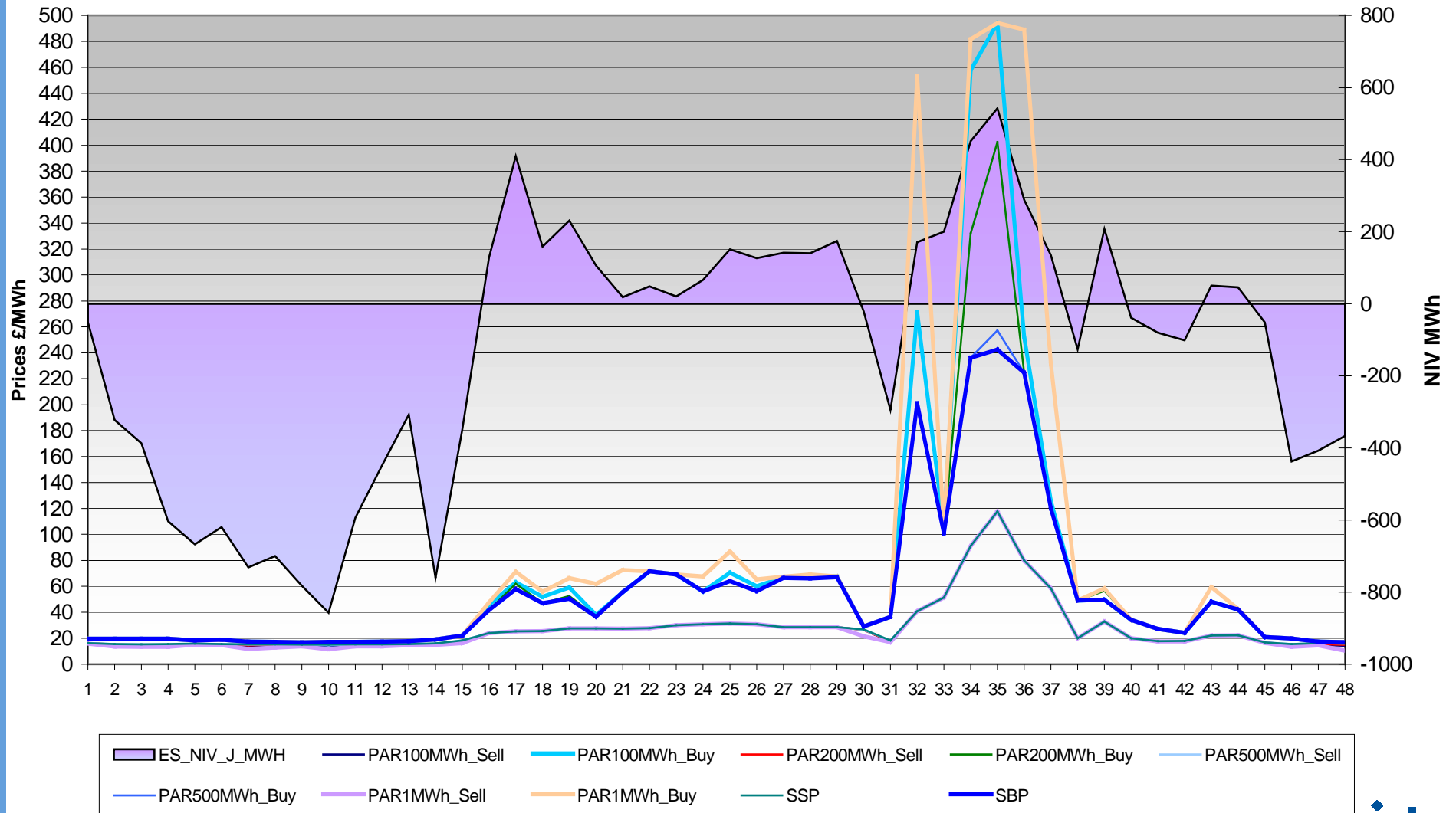
Imbalance Price & Associated Variables : 24th Jan 05



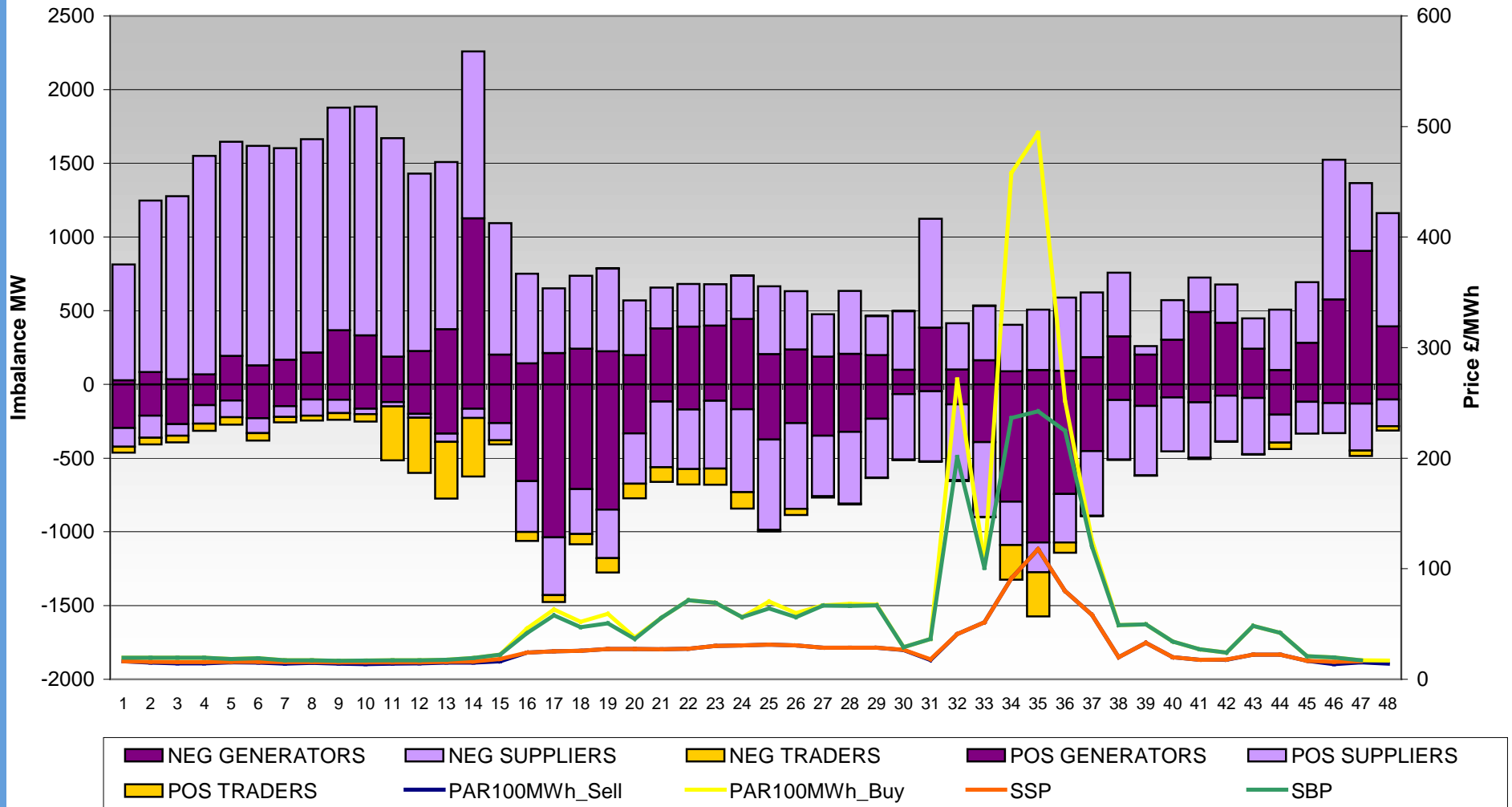
Imbalance Price & Associated Variables 24th Jan 05



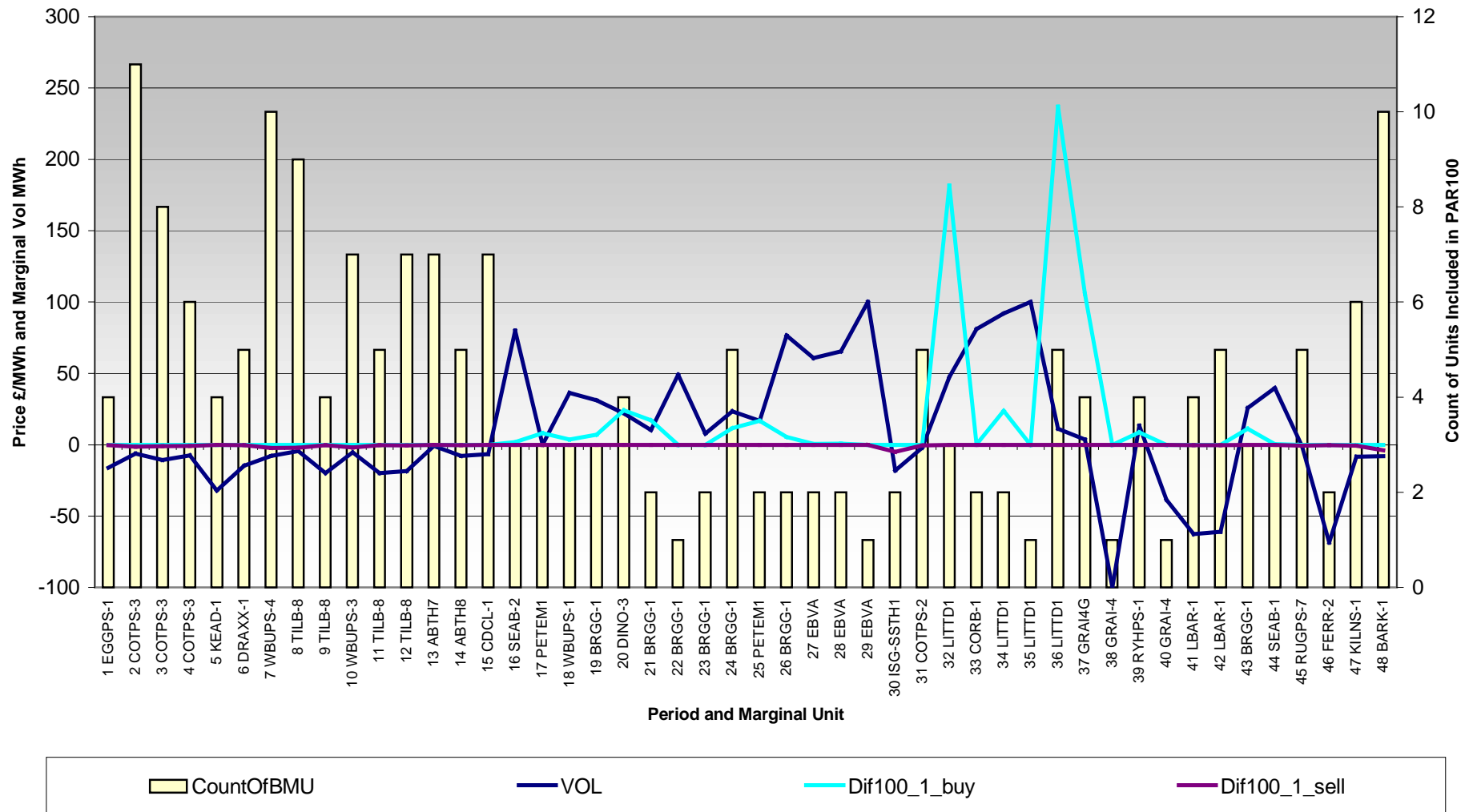
Imbalance Price & Associated Variables : 13th Dec 04



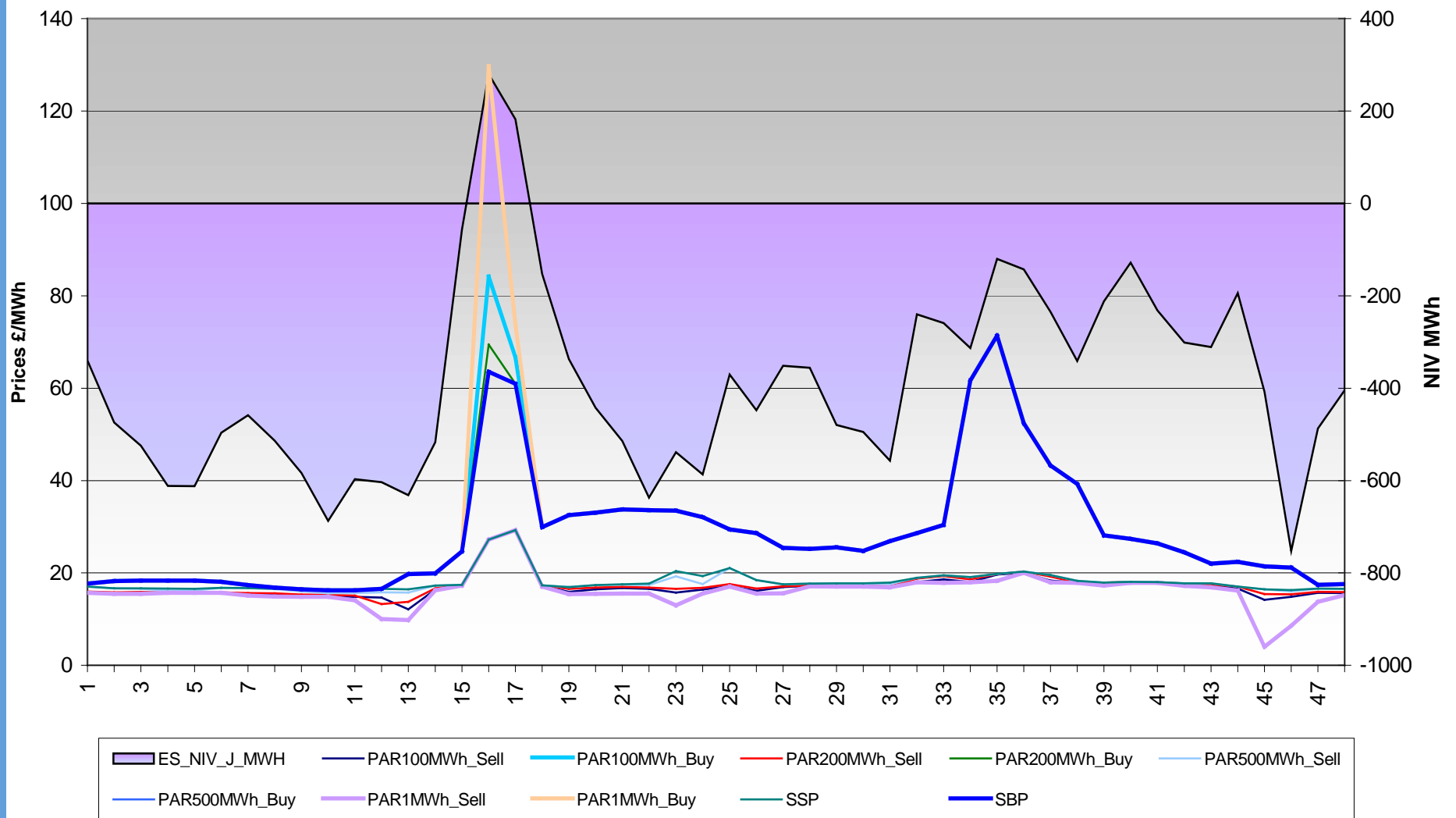
Imbalance Price & Associated Variables : 13th Dec 04



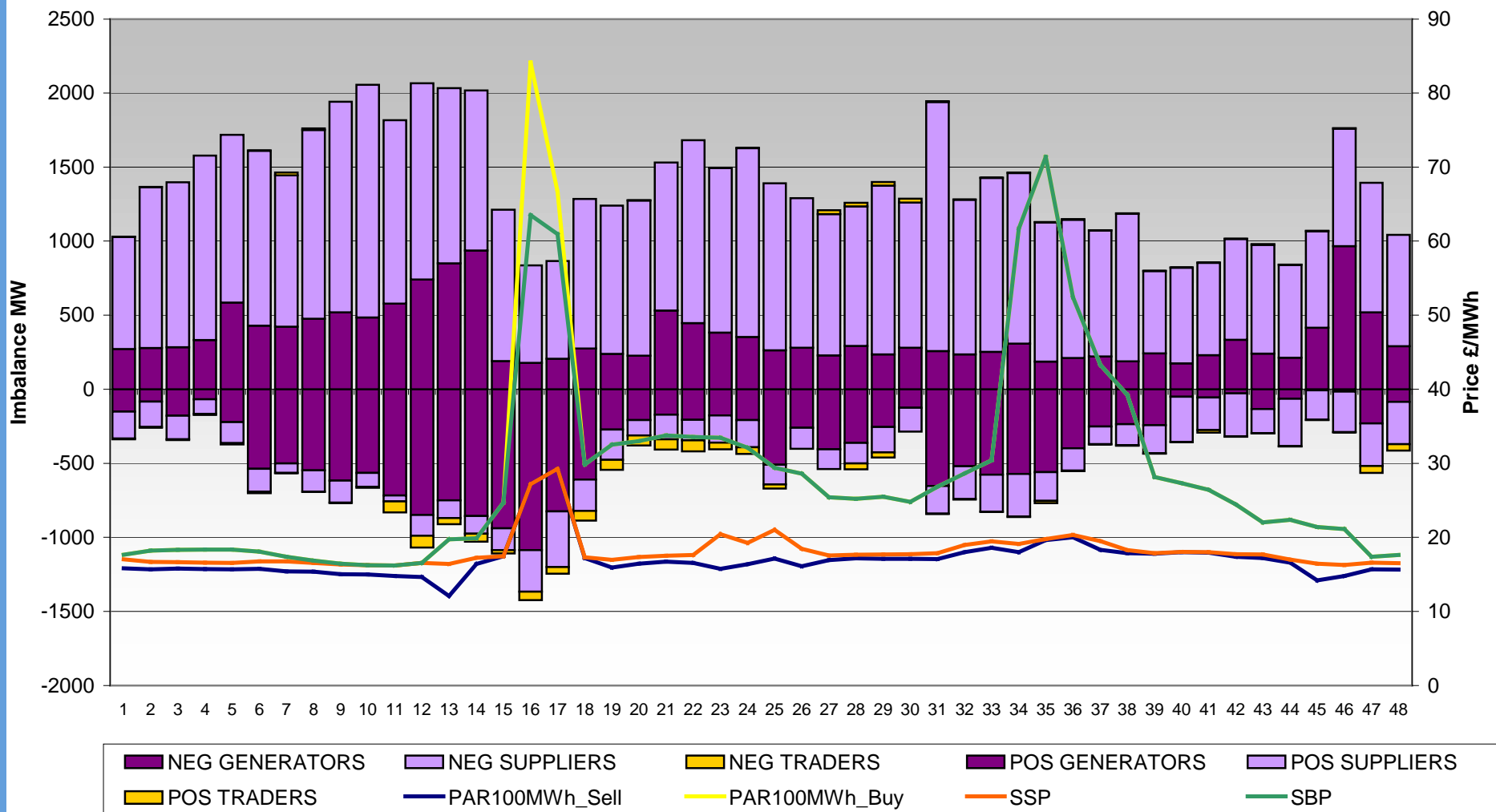
Imbalance Price & Associated Variables 13th Dec 04



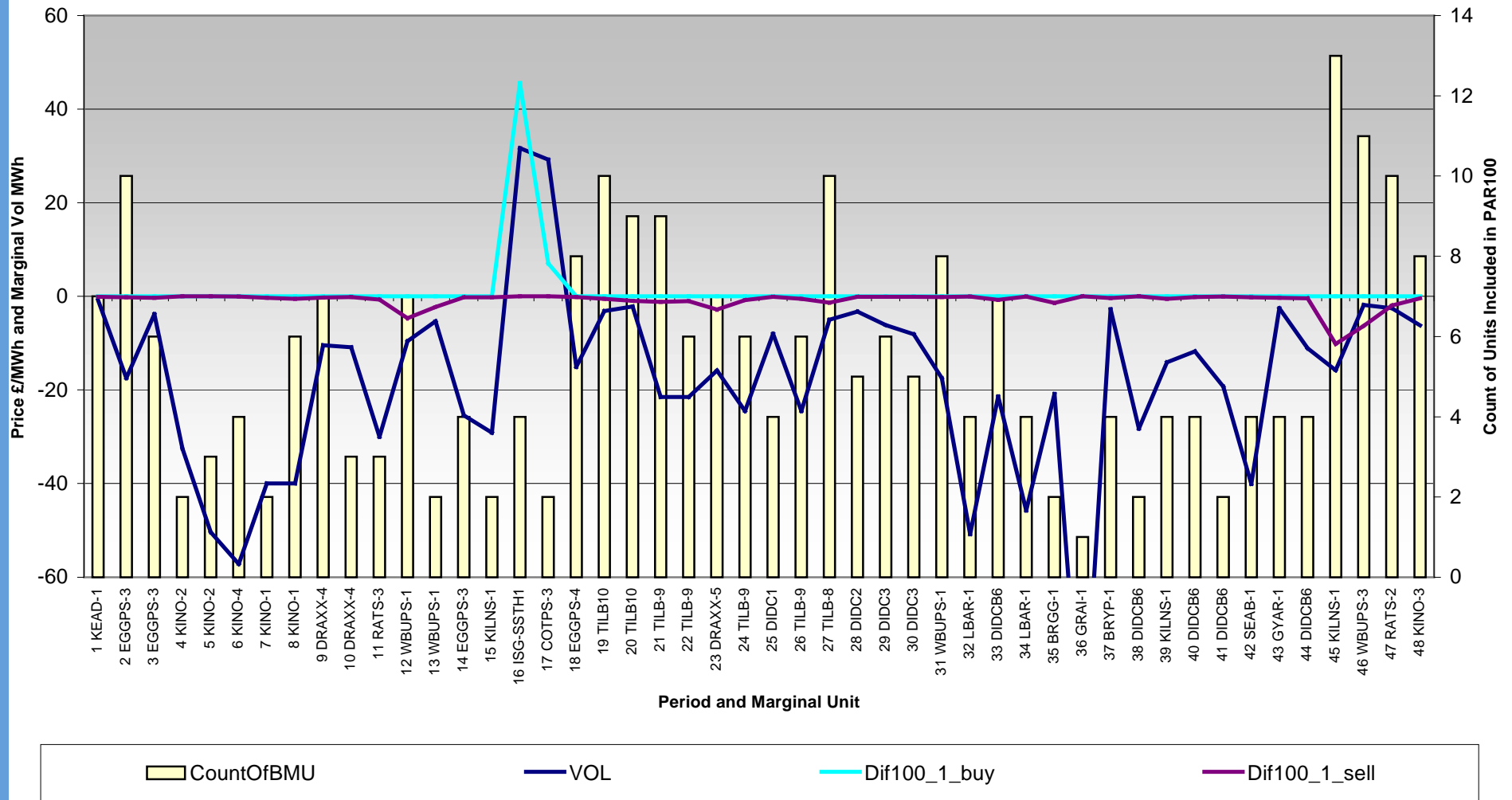
Imbalance Price & Associated Variables : 01st Dec 04



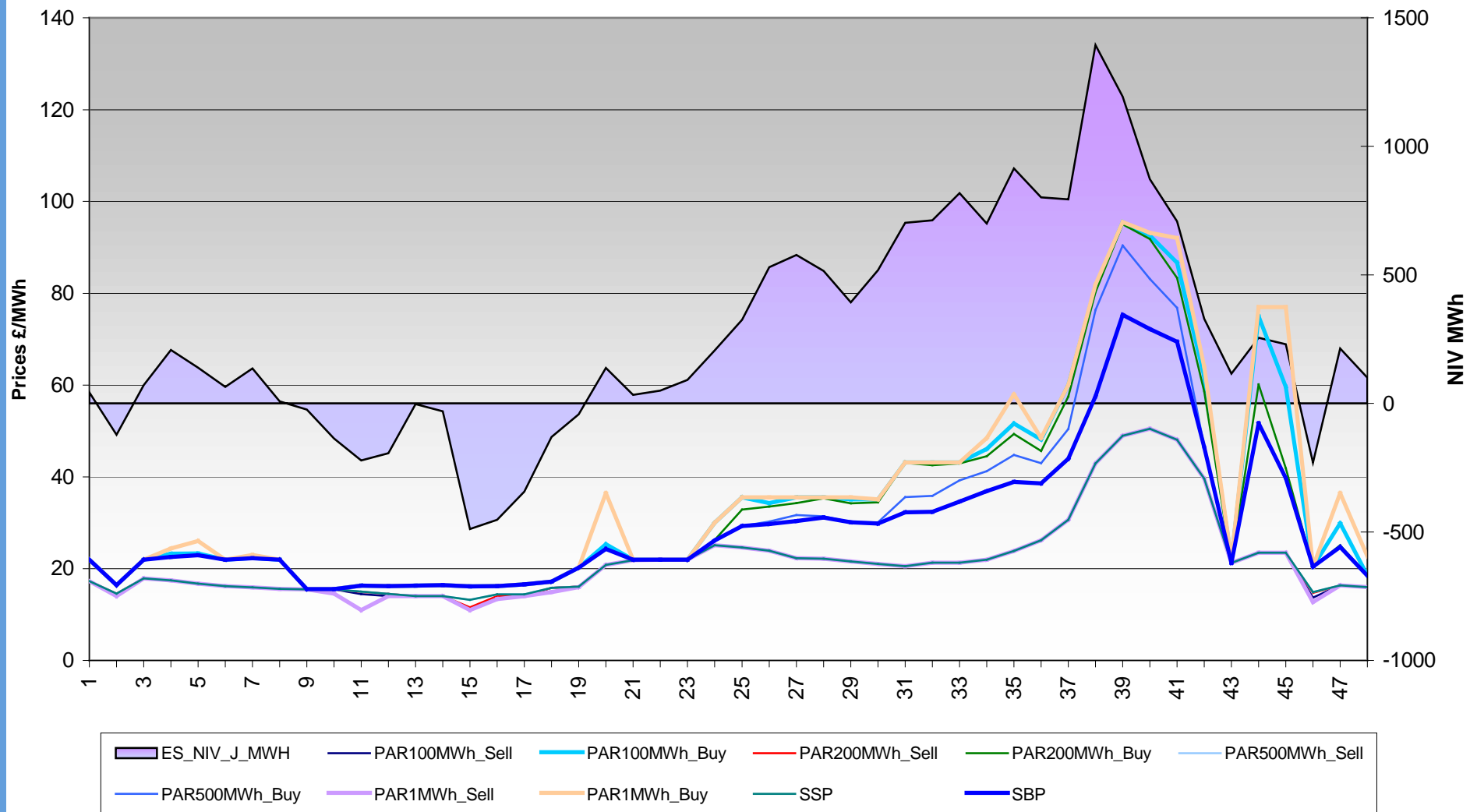
Imbalance Price & Associated Variables : 01st Dec 04



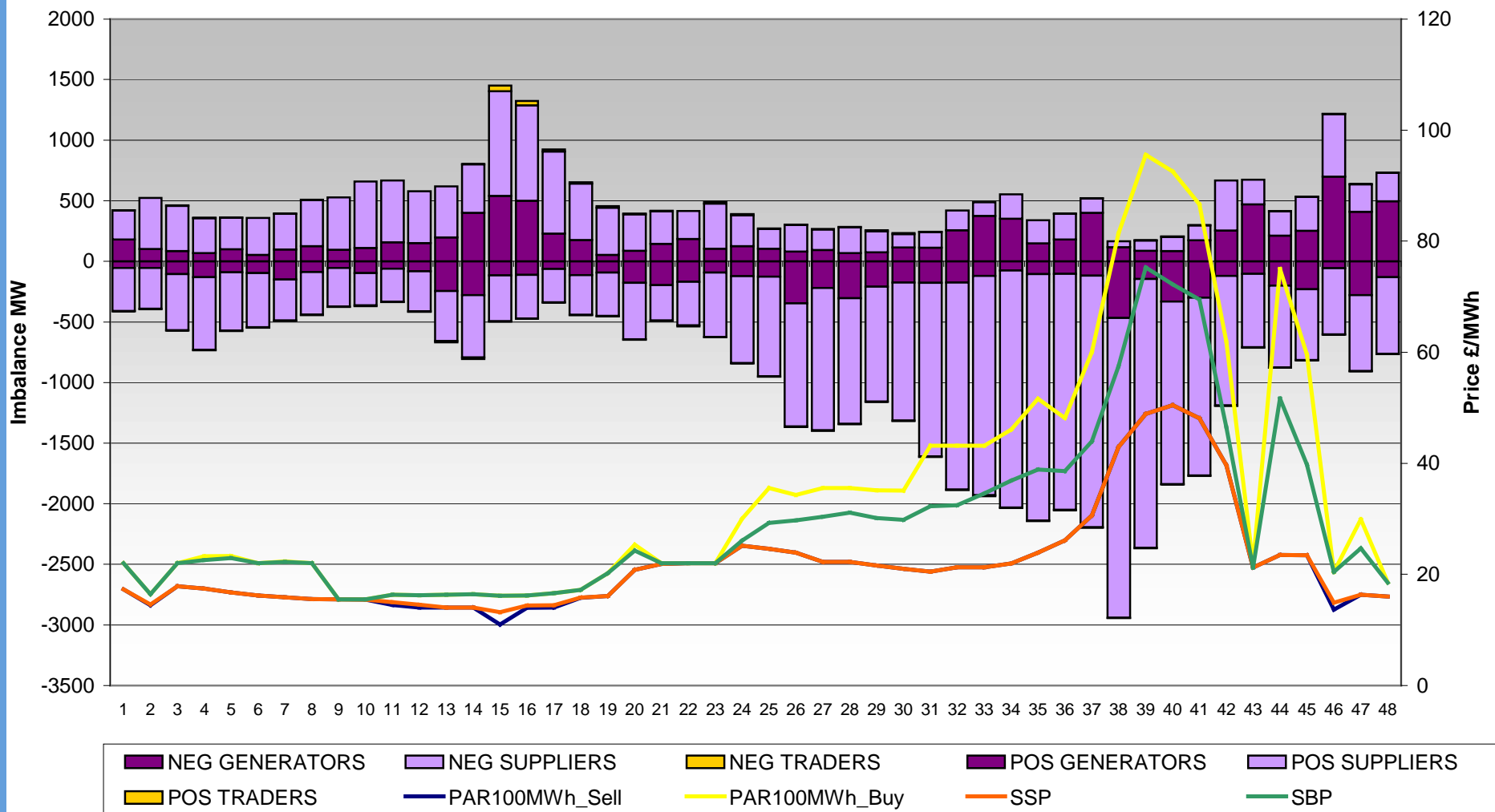
Imbalance Price & Associated Variables 01st Dec 04



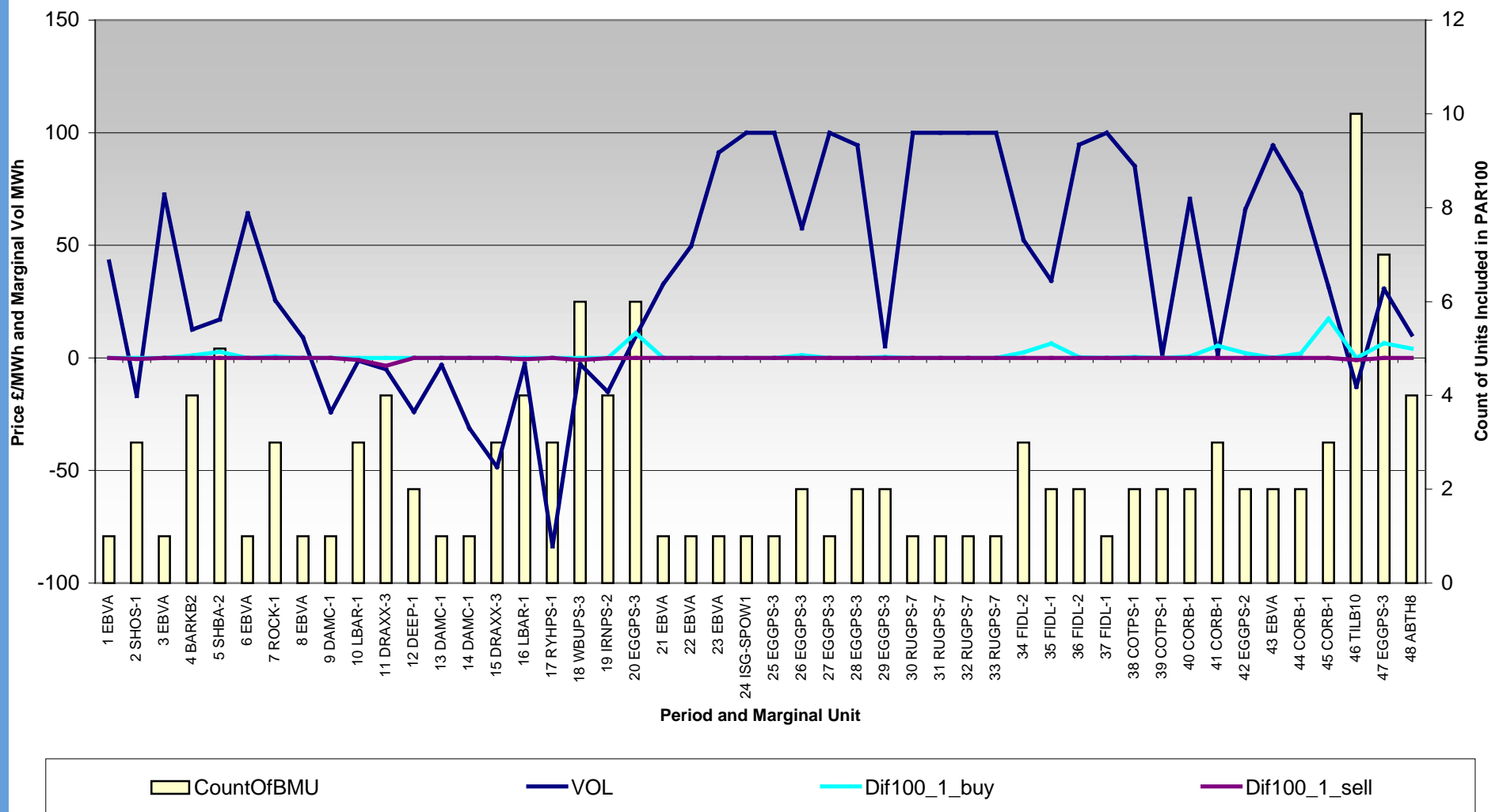
Imbalance Price & Associated Variables : 03rd Oct 04



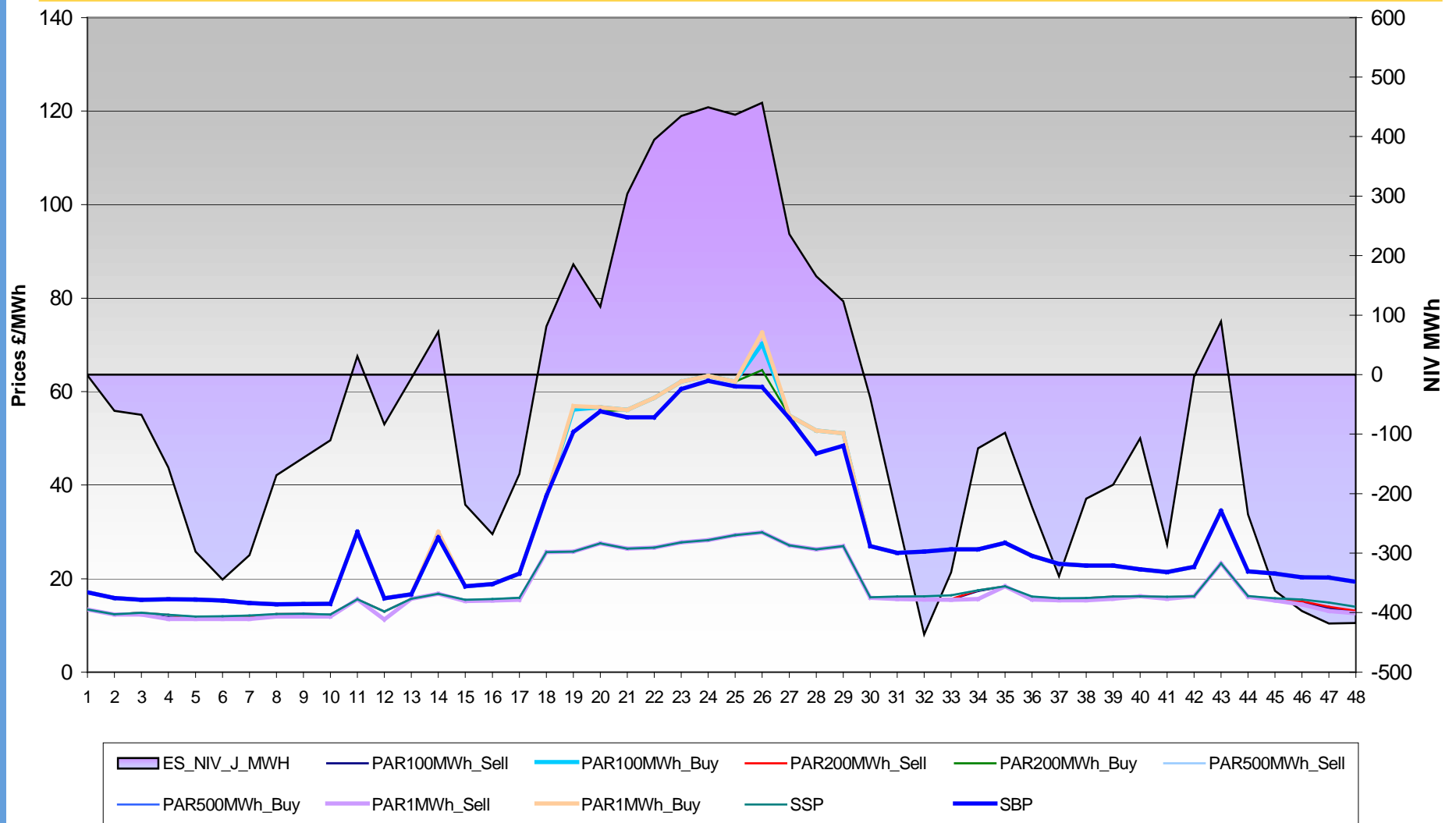
Imbalance Price & Associated Variables : 03rd Oct 04



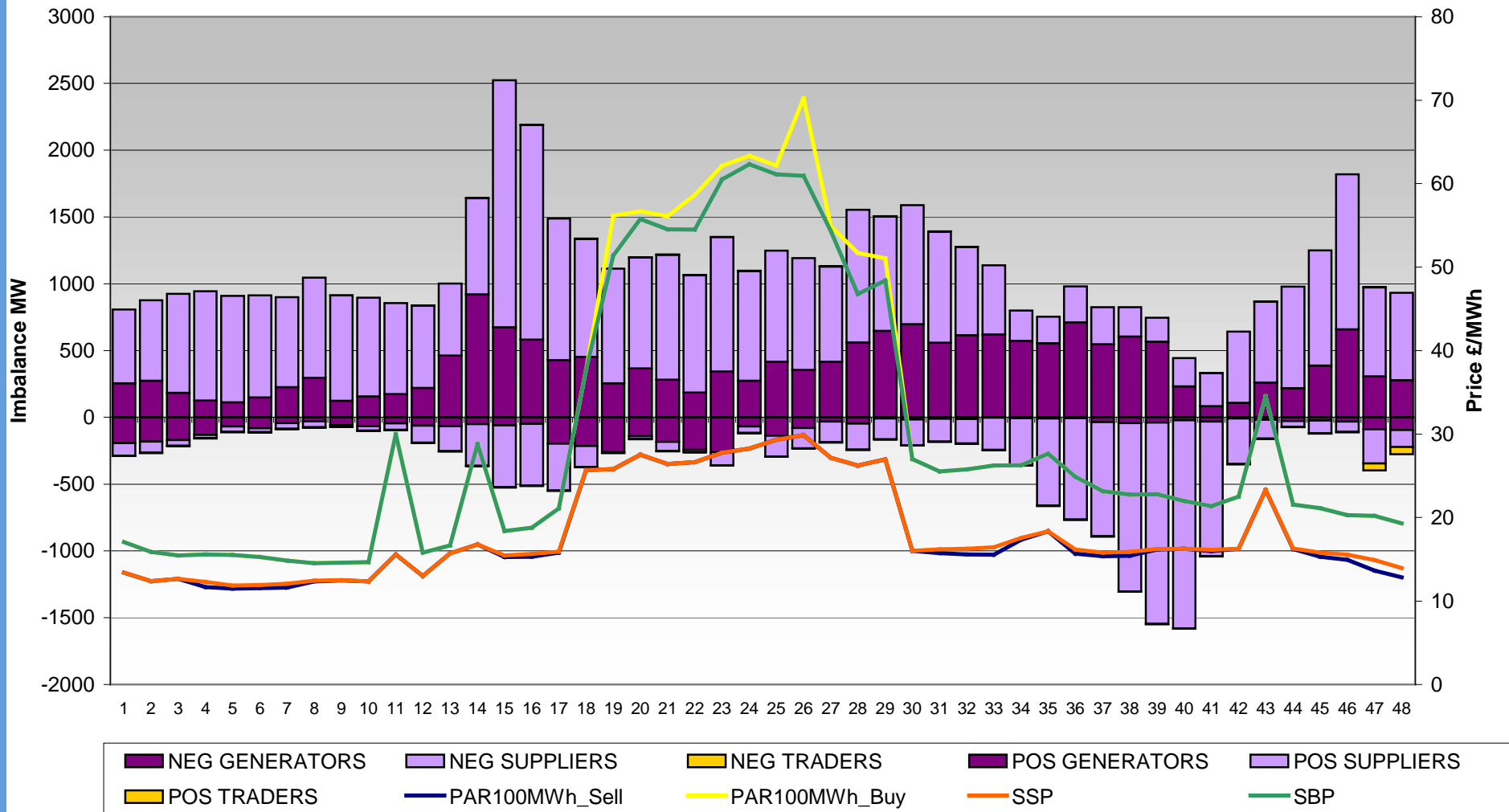
Imbalance Price & Associated Variables 03rd Oct 04



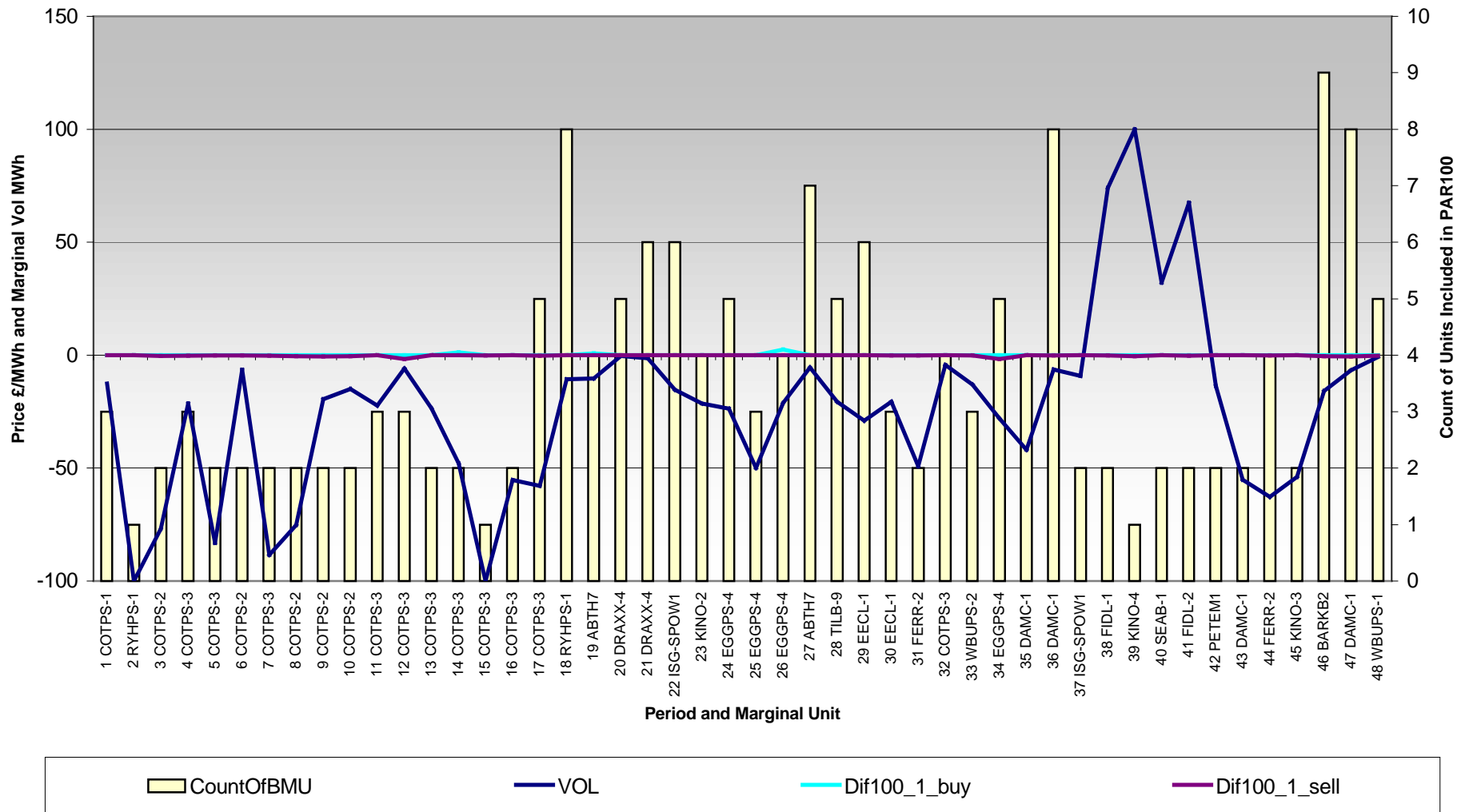
Imbalance Price & Associated Variables : 12th Sep 04



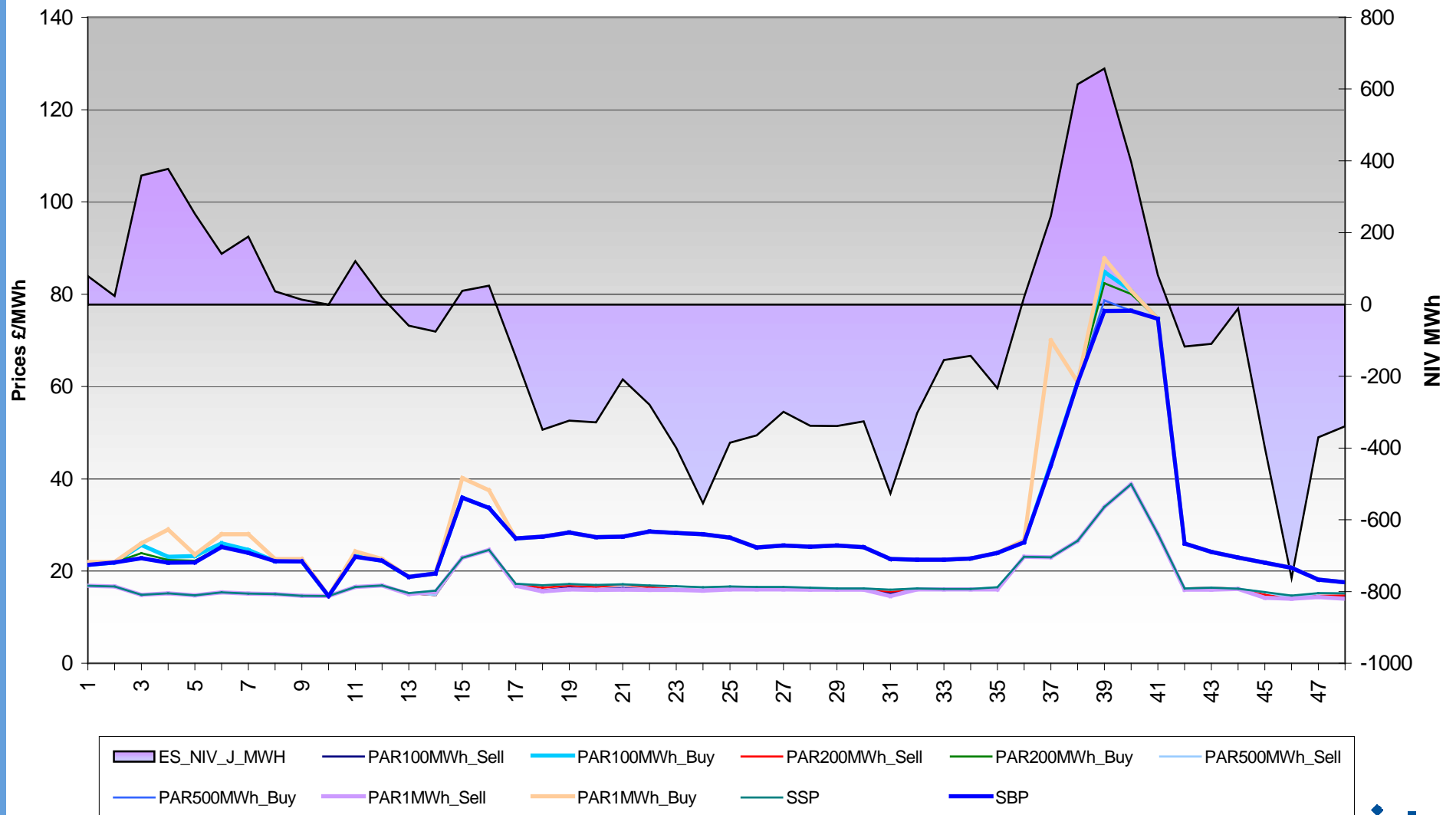
Imbalance Price & Associated Variables : 12th Sep 04



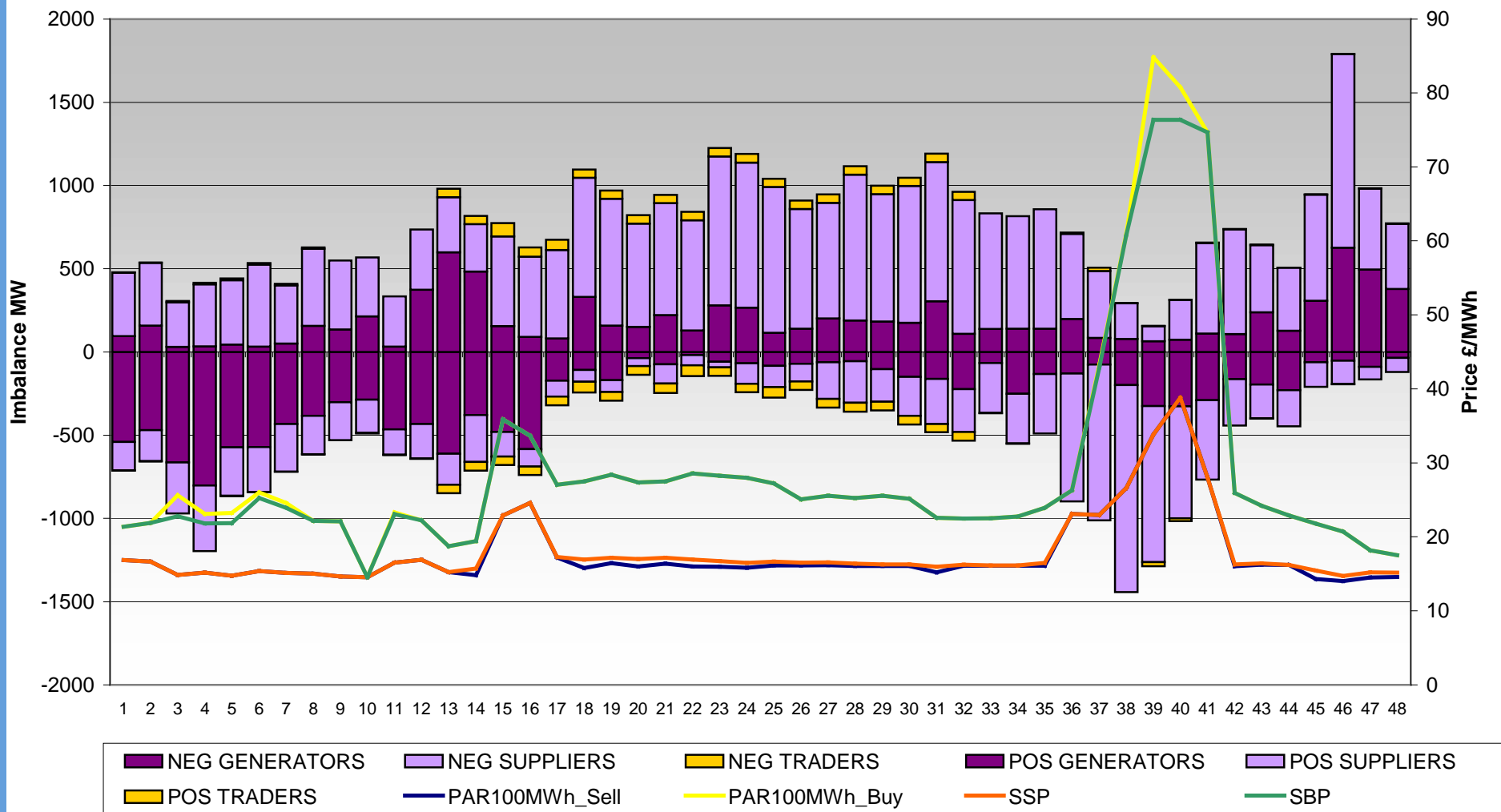
Imbalance Price & Associated Variables 12th Sep 04



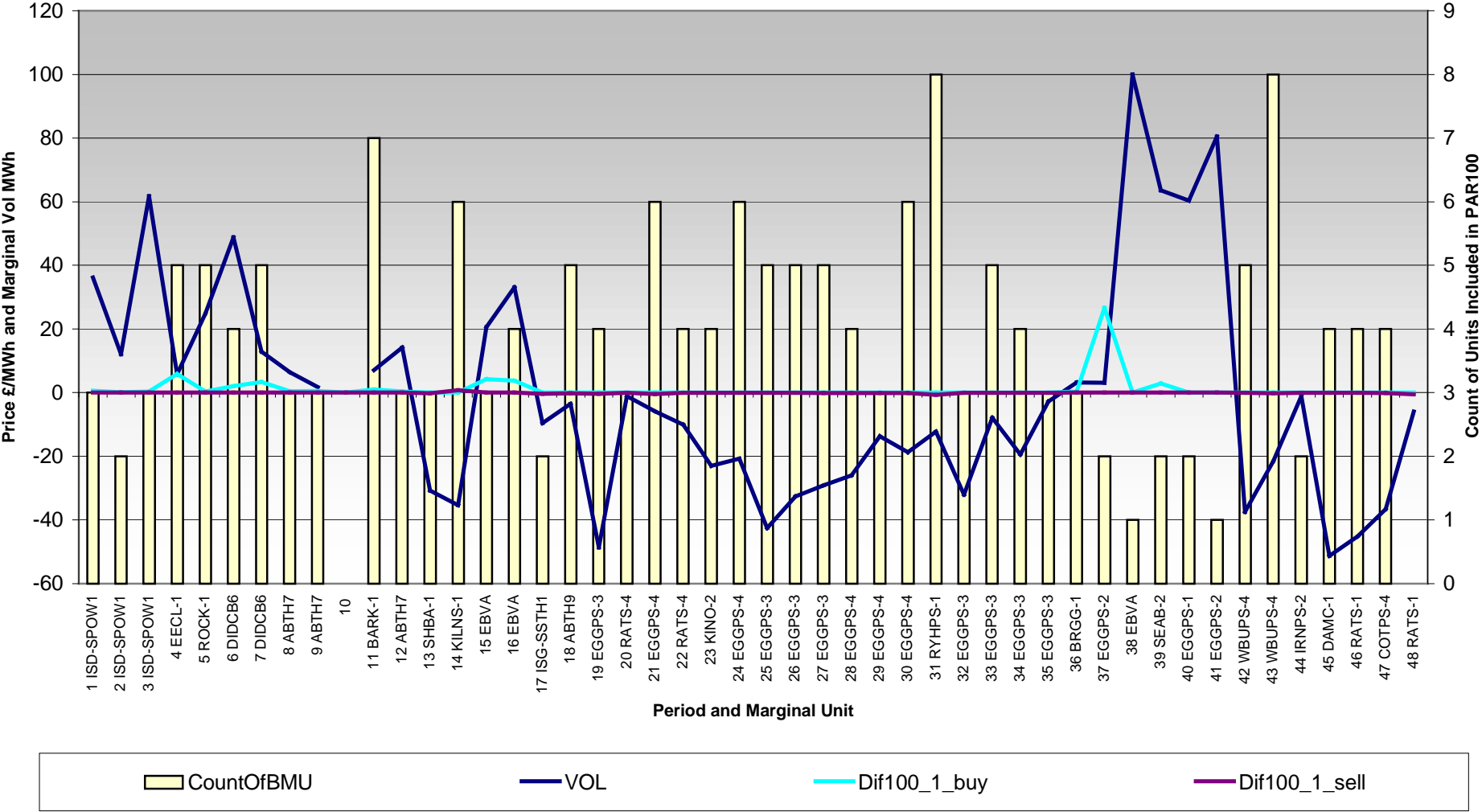
Imbalance Price & Associated Variables : 29th Sep 04



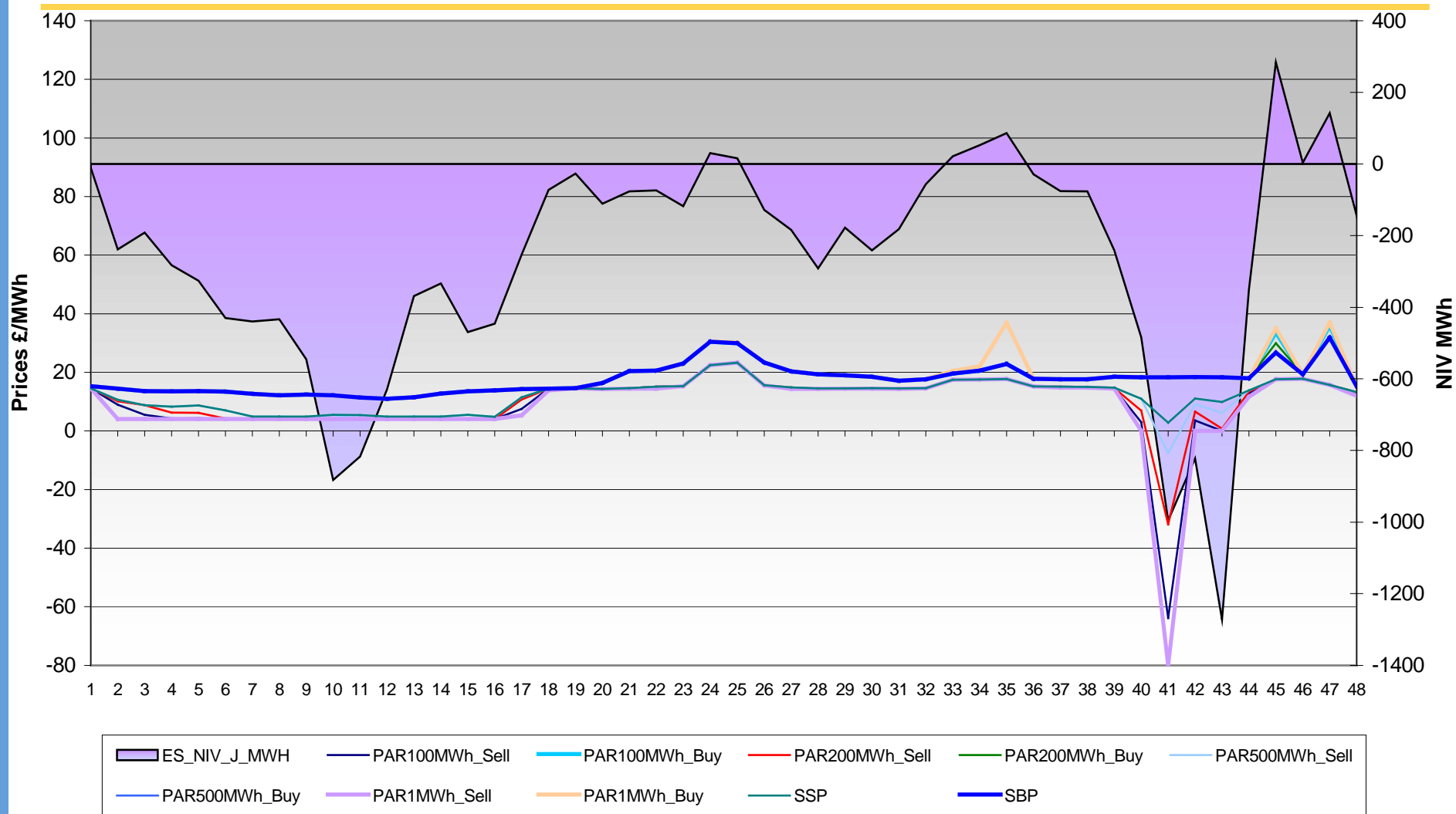
Imbalance Price & Associated Variables : 29th Jun 04



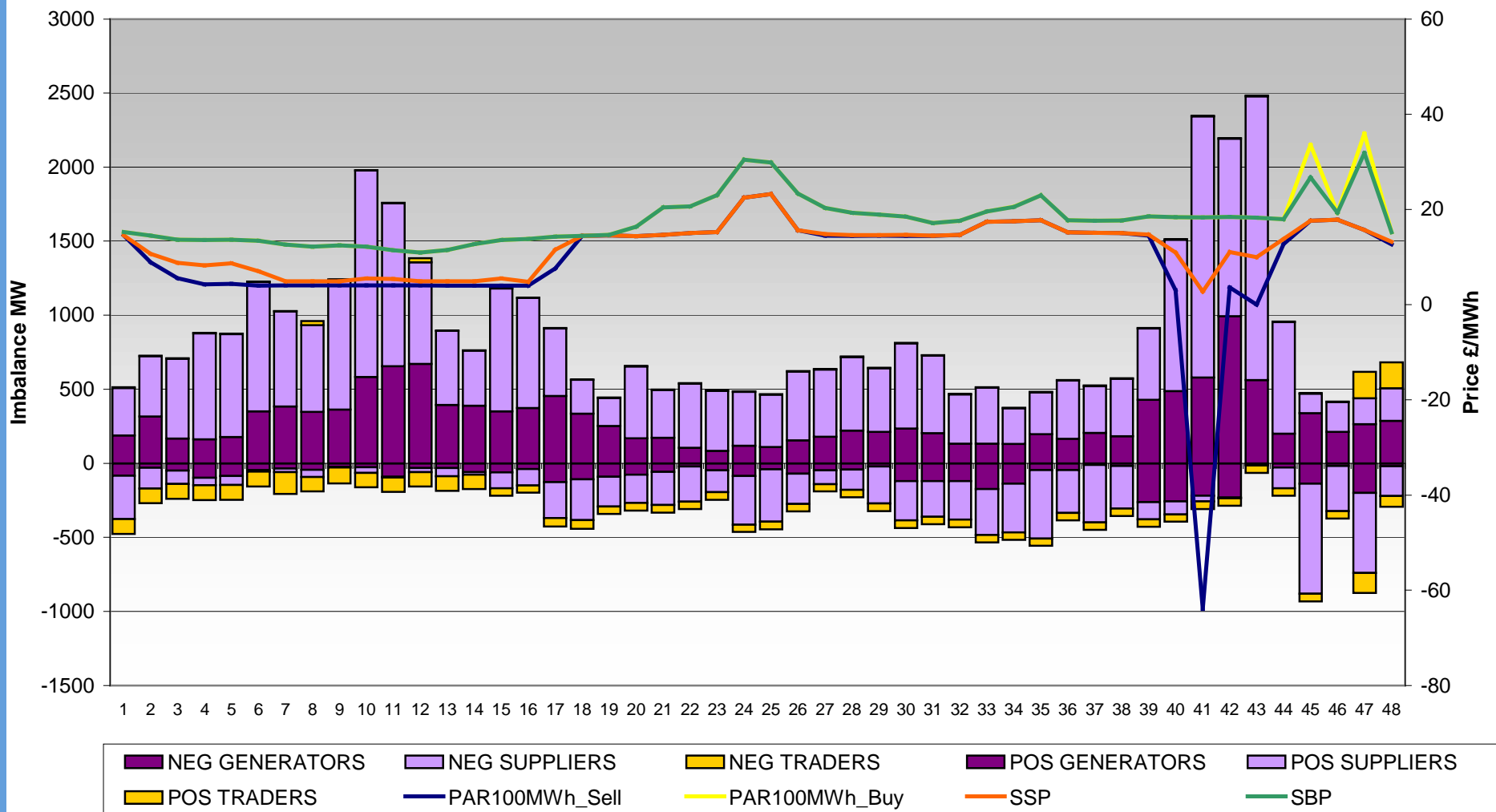
Imbalance Price & Associated Variables 29th Sep 04



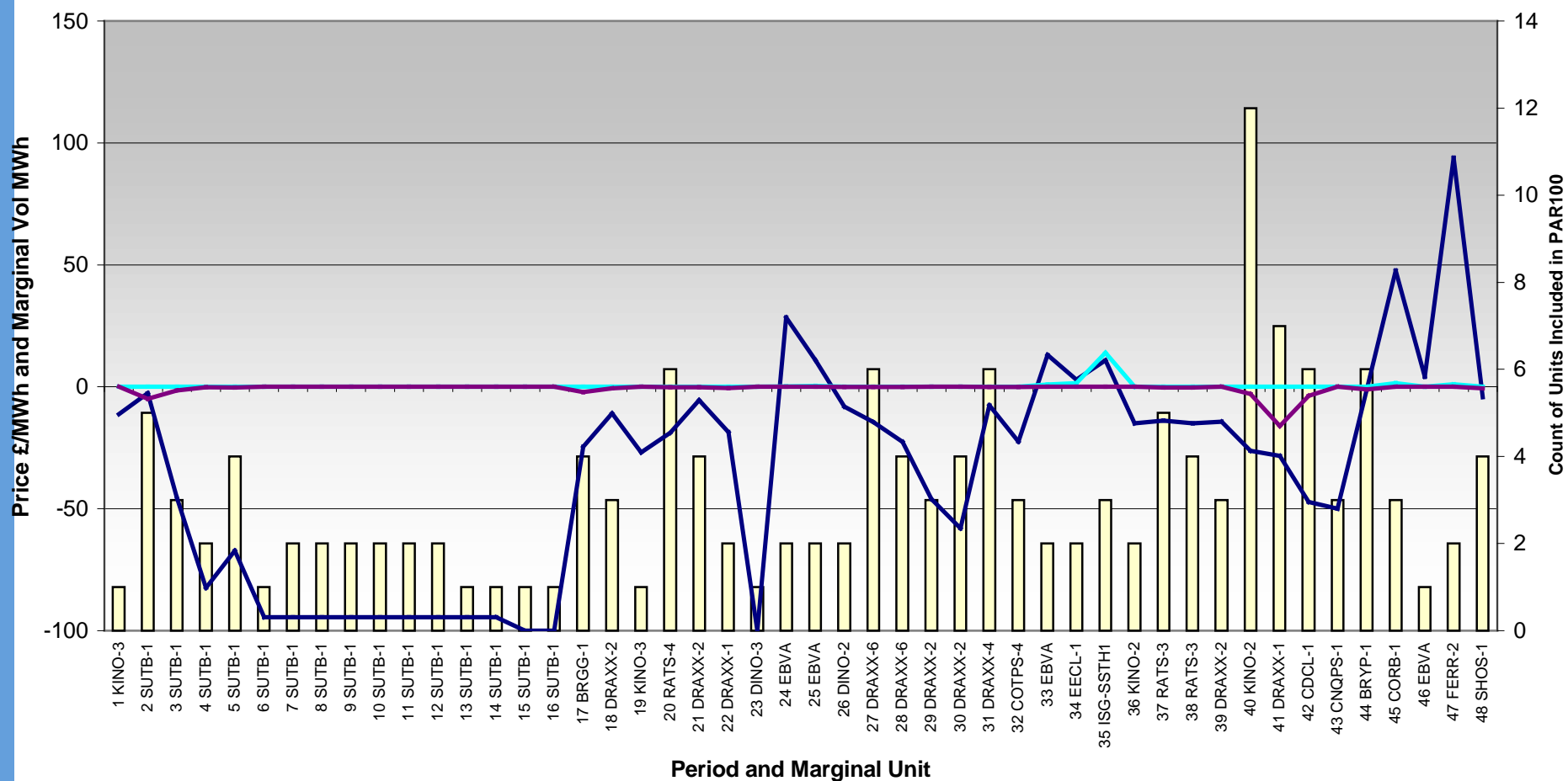
Imbalance Price & Associated Variables : 13th Jun 04



Imbalance Price & Associated Variables : 13th Jun 04



Imbalance Price & Associated Variables 13th Jun 04



CountOfBMU

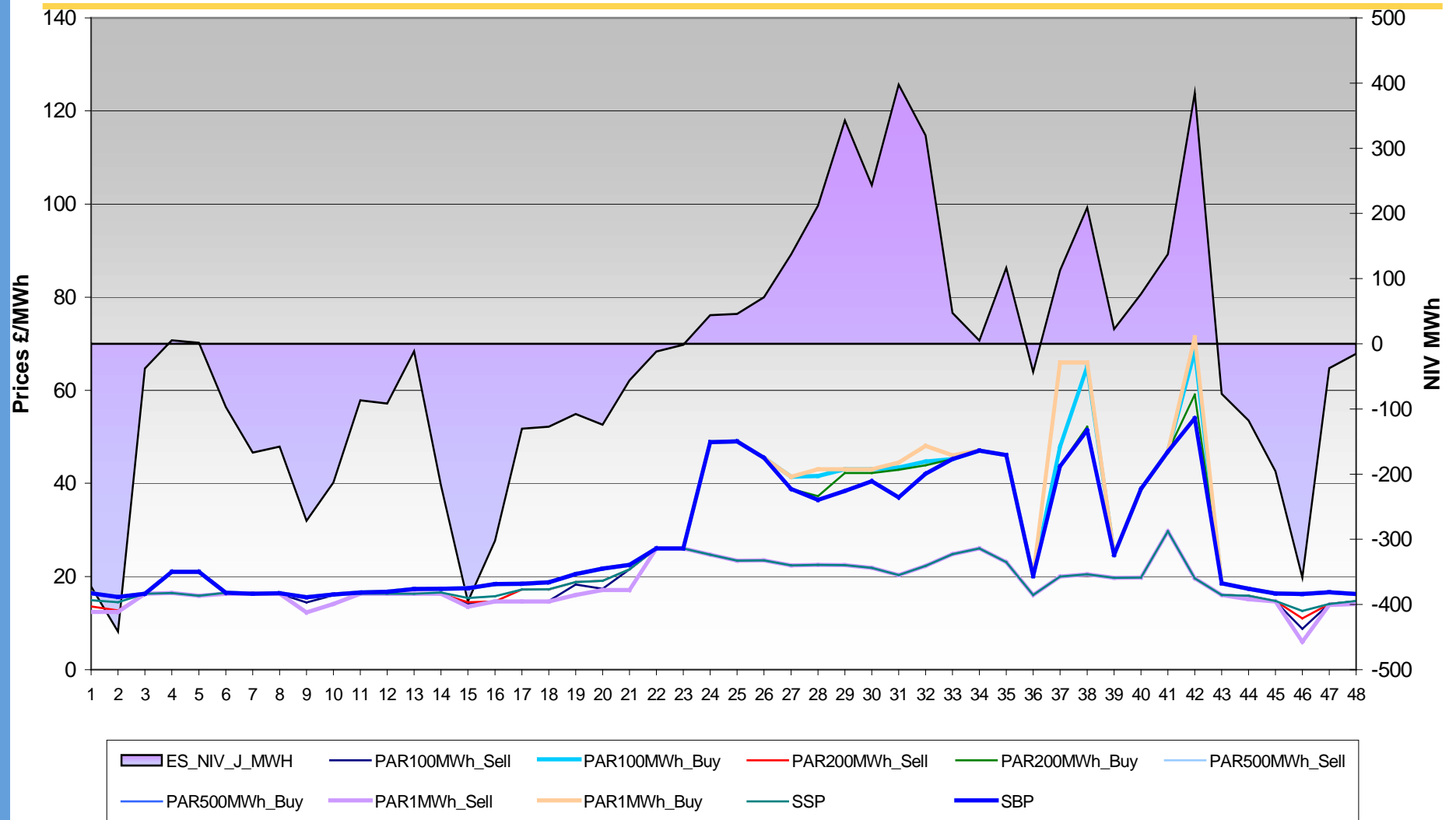
VOL

Dif100_1_buy

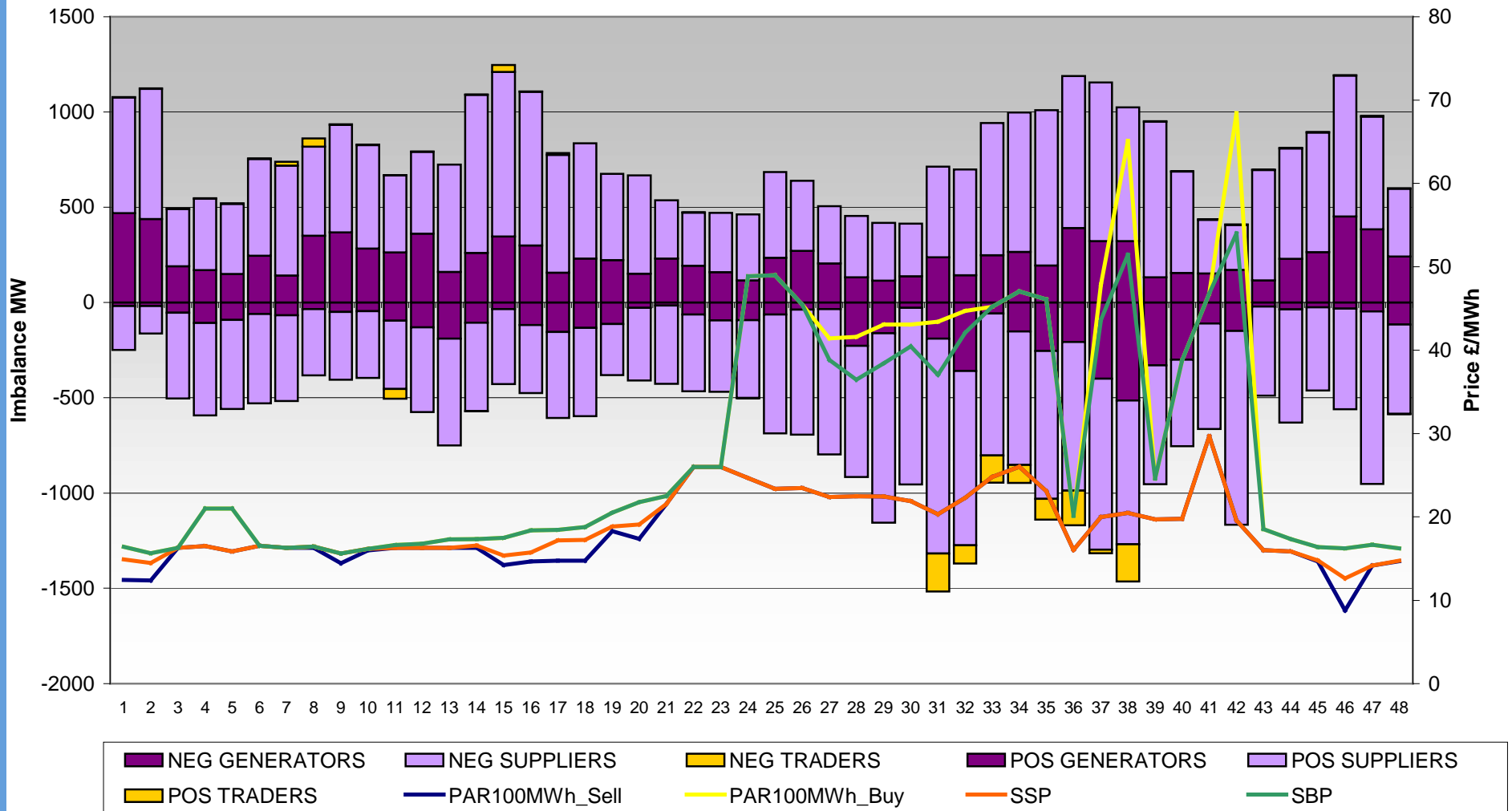
Dif100_1_sell

nationalgrid

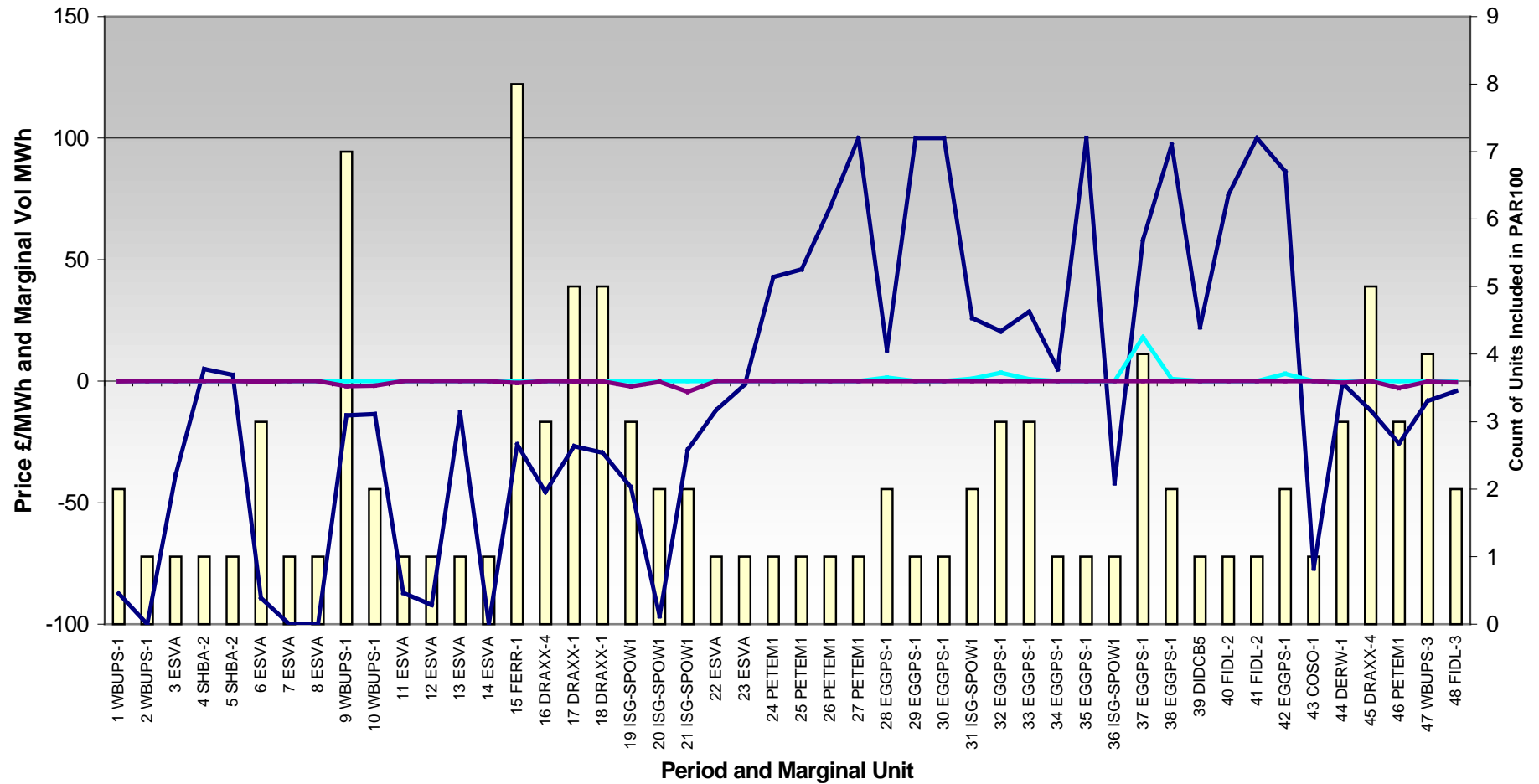
Imbalance Price & Associated Variables : 06th pr 04



Imbalance Price & Associated Variables : 06th Apr 04



Imbalance Price & Associated Variables 06th Apr 04



CountOfBMU

VOL

Dif100_1_buy

Dif100_1_sell

nationalgrid